

WAAS CH 99332 W35A	APP CRS 346°	Rwy Idg TDZE Apt Elev	5318 4729 4734
--	------------------------	-----------------------------	---

RNAV (GPS) RWY 35

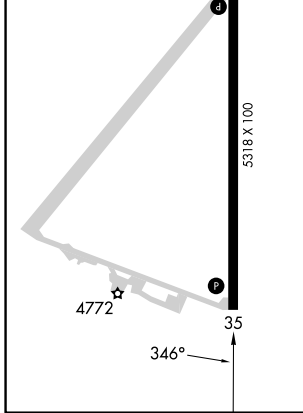
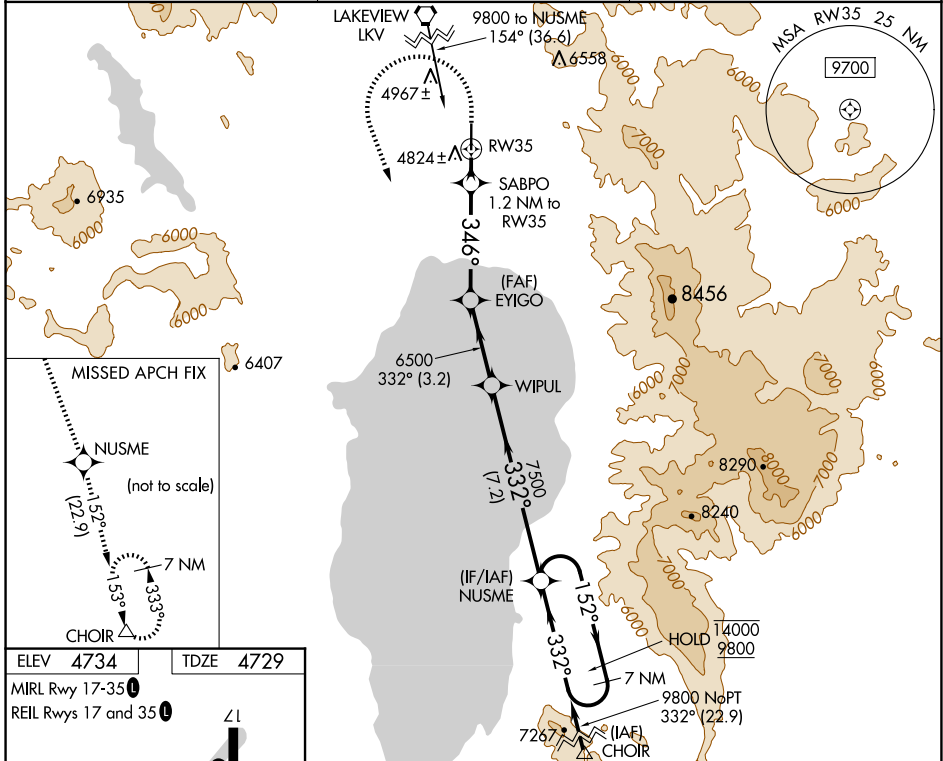
LAKE COUNTY (LKV)

RNP APCH. MISSED APPROACH: (Do not exceed 235K until NUSME) Climb to 5200 then climbing left turn to 11000 direct NUSME and on track 152° to CHOIR and hold.

For uncompensated Baro-VNAV systems, LNAV/VNAV NA below -24°C or above 50°C. Circling NA east of Rwy 17-35.

-26°C

AWOS-3PT 135.525	SEATTLE CENTER 127.6 346.35	UNICOM 122.8 (CTAF) 0
----------------------------	---------------------------------------	---------------------------------



5200	11000	NUSME	tr 152°	CHOIR	NUSME	7 NM Holding Pattern
*LNAV only		SABPO 1.2 NM to RW35	EYIGO 6500	WIPUL 7500	152° → 14000	← 332° 9800
RW35		5160*	6500	7500	GP 3.00° TCH 45	
1.2 NM		4.2 NM	3.2 NM	7.2 NM		
CATEGORY	A		B	C	D	
LPV DA	4979-1		250 (300-1)			
LNAV/VNAV DA	5121-1½		392 (400-1½)			
LNAV MDA	5080-1		351 (400-1)			
CIRCLING	5160-1	5220-1	5320-2	5480-2½		
	426 (500-1)	486 (500-1)	586 (600-2)	746 (800-2½)		

NW-1, 17 APR 2025 to 15 MAY 2025

NW-1, 17 APR 2025 to 15 MAY 2025