

MILLERSBURG, OHIO

AL-5561 (FAA)

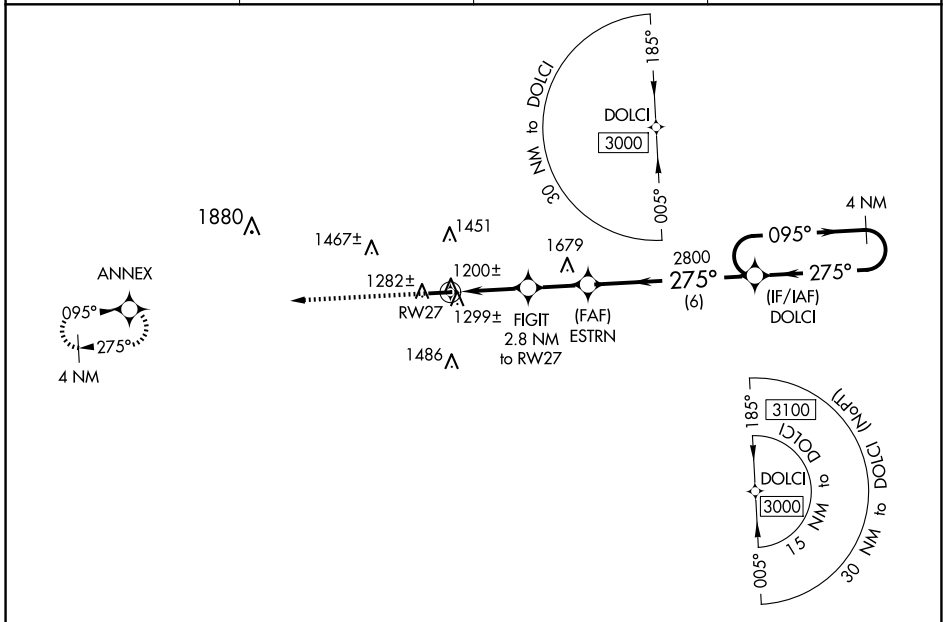
23166

WAAS CH 57937 W27A	APP CRS 275°	Rwy Idg 4400 TDZE 1215 Apt Elev 1227
--	------------------------	---

RNAV (GPS) RWY 27

HOLMES COUNTY (10G)

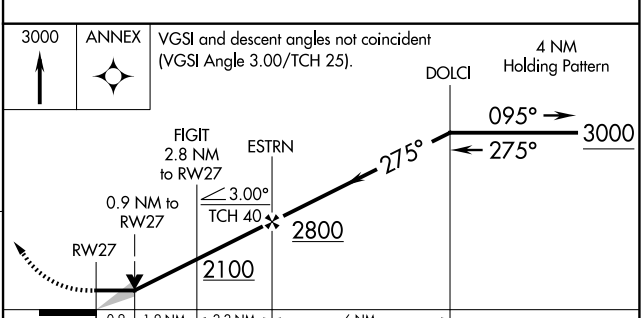
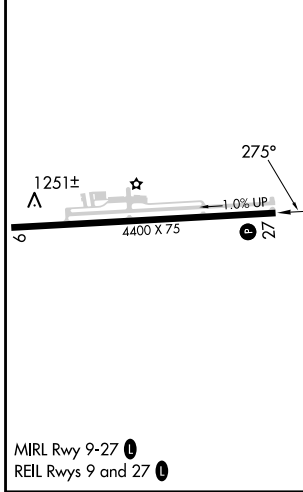
RNP APCH - GPS.			MISSED APPROACH: Climb to 3000 direct ANNEX and hold.
When local altimeter setting not received, use Wayne County altimeter setting: increase all MDA 60 feet and visibility LNAV and Circling Cats C and D ¼ SM.			
AWOS-3 128.325	INDIANAPOLIS CENTER 124.45 323.275	UNICOM 123.0 (CTAF)	123.4 0



EC-2, 17 APR 2025 to 15 MAY 2025

EC-2, 17 APR 2025 to 15 MAY 2025

ELEV 1227	TDZE 1215
-----------	-----------



CATEGORY	A	B	C	D
LP MDA	1480-1		265 (300-1)	
LNAV MDA	1560-1		345 (400-1)	
C CIRCLING	1760-1	533 (600-1)	1840-1¾ 613 (700-1¾)	1860-2 633 (700-2)

MILLERSBURG, OHIO
Orig-C 29DEC22

40°32'N-81°57'W

RNAV (GPS) RWY 27

HOLMES COUNTY (10G)