

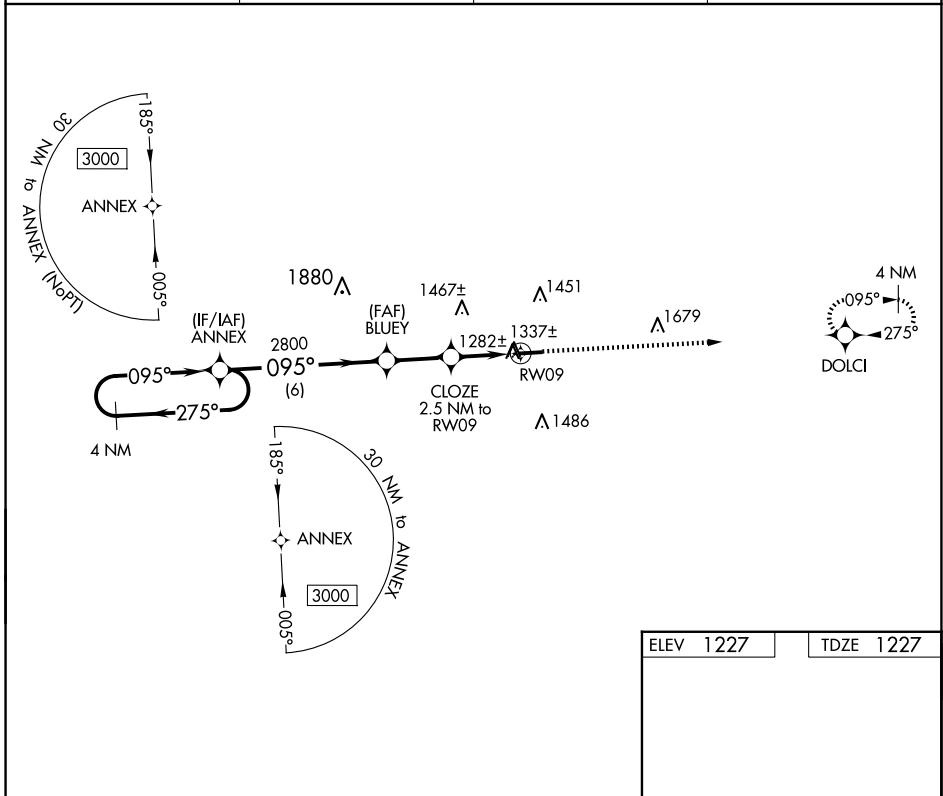
APP CRS	Rwy Idg	<b>4400</b>
<b>095°</b>	TDZE	<b>1227</b>
	Apt Elev	<b>1227</b>

# RNAV (GPS) RWY 9

HOLMES COUNTY (10G)

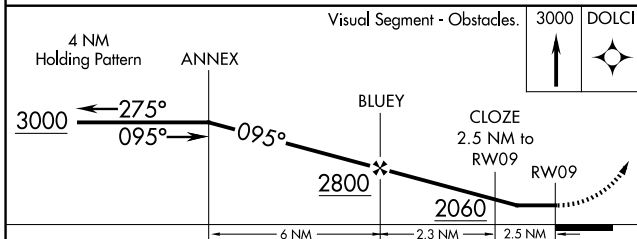
RNP APCH - GPS.	MISSED APPROACH: Climb to 3000 direct DOLCI and hold.
<p><b>▼</b> Rwy 9 helicopter visibility reduction below 3/4 SM NA. When local altimeter setting not received, use Wayne County altimeter setting: increase all MDA 60 feet and visibility LNAV and Circling Cats C and D 1/4 SM.</p> <p><b>▲</b></p>	

AWOS-3 <b>128.325</b>	INDIANAPOLIS CENTER <b>124.45 323.275</b>	UNICOM <b>123.0</b> (CTAF)	<b>123.4</b> <b>0</b>
--------------------------	--	-------------------------------	-----------------------



EC-2, 17 APR 2025 to 15 MAY 2025

EC-2, 17 APR 2025 to 15 MAY 2025



ELEV 1227	TDZE 1227
<p>MIRL Rwy 9-27 <b>0</b></p> <p>REIL Rwy 9 and 27 <b>0</b></p>	

CATEGORY	A	B	C	D
LNAV MDA	1620-1	393 (400-1)	1620-1 1/8	393 (400-1 1/8)
<b>C</b> CIRCLING	1760-1	533 (600-1)	1840-1 3/4 613 (700-1 3/4)	1860-2 633 (700-2)