

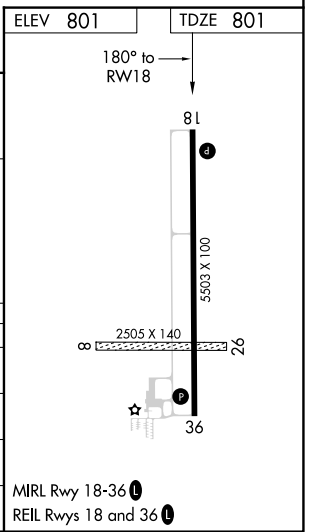
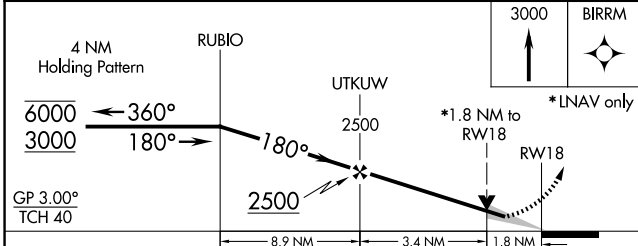
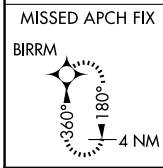
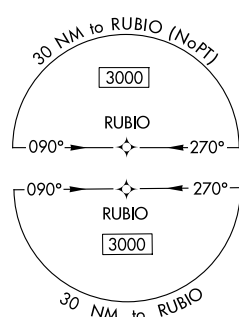
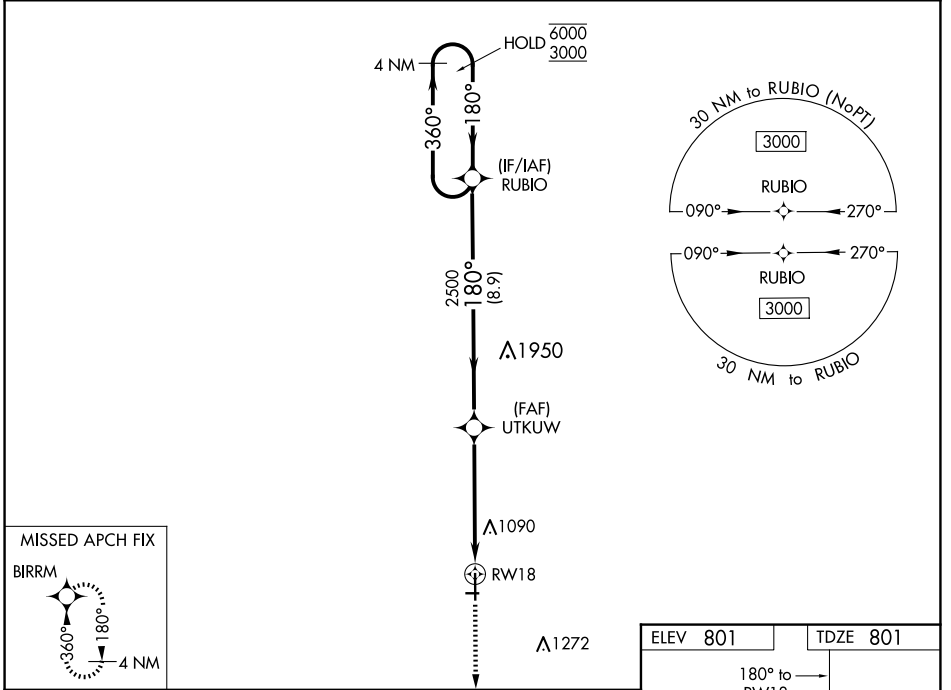
WAAS CH 82503 W18A	APP CRS 180°	Rwy Idg TDZE Apt Elev	5503 801 801
--	------------------------	-----------------------------	---

RNAV (GPS) RWY 18

FAIRFIELD MUNI (F'FL)

RNP APCH.	MISSED APPROACH: Climb to 3000 direct BIRRM and hold.
⚠ Circling NA to Rwys 8 and 26. For uncompensated Baro-VNAV systems, LNAV/VNAV NA below -16°C or above 54°C.	

AWOS-3 132.025	CHICAGO CENTER 118.15 335.575	UNICOM 122.7 (CTAF)
--------------------------	---	-------------------------------



CATEGORY	A	B	C	D
LPV DA	1001-3/4	200 (200-3/4)		NA
LNAV/VNAV DA	1471-17/8	670 (700-17/8)		NA
LNAV MDA	1400-1	599 (600-1)	1400-1 3/4 599 (600-1 3/4)	NA
C CIRCLING	1400-1 599 (600-1)	1440-1 639 (700-1)	1440-1 3/4 639 (700-1 3/4)	NA

NC-3, 17 APR 2025 to 15 MAY 2025

NC-3, 17 APR 2025 to 15 MAY 2025

MIRL Rwy 18-36
REIL Rws 18 and 36