

WAAS CH <b>86905</b> <b>W04A</b>	APP CRS <b>040°</b>	Rwy Idg <b>4775</b> TDZE <b>58</b> Apt Elev <b>72</b>
--	------------------------	---

# RNAV (GPS) RWY 4

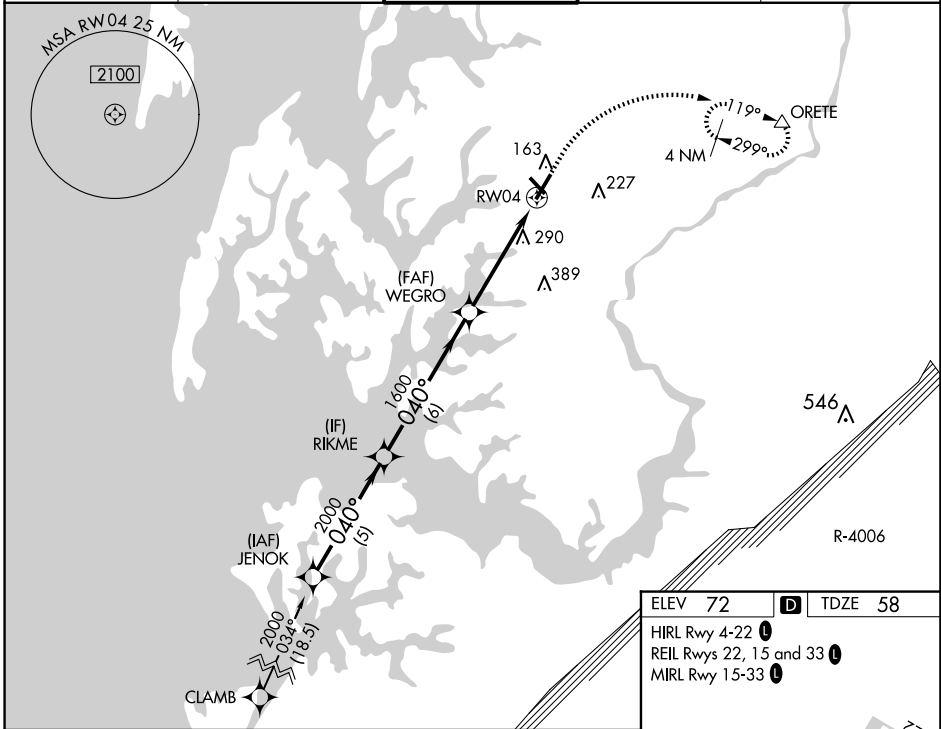
EASTON/NEWNAM FLD (ESN)

RNP APCH - GPS.

**⚠** When local altimeter setting not received, use Cambridge altimeter setting; increase LPV DA to 303 feet, LNAV/VNAV DA to 670 feet and visibility  $\frac{1}{8}$  SM; increase all MDA's 60 feet and visibility LNAV Cat C/D and Circling Cat C  $\frac{1}{8}$  SM, and Circling Cat D  $\frac{1}{4}$  SM. VDP and Baro-VNAV NA when using Cambridge altimeter setting. Circling Rwy 15, 33 NA at night. For uncompensated Baro-VNAV systems, LNAV/VNAV NA below  $-15^{\circ}\text{C}$  or above  $54^{\circ}\text{C}$ .

**MISSED APPROACH:**  
Climb to 700 then climbing right turn to 2000 direct ORETE and hold.

ATIS <b>124.475</b>	POTOMAC APP CON <b>133.75 254.35</b>	EASTON TOWER <b>★</b> <b>118.525</b> (CTAF) <b>📻</b>	GND CON <b>119.075</b>	CLNC DEL <b>119.075</b>
------------------------	---	---	---------------------------	----------------------------



	JENOK	RIKME	WEGRO	RW04	ORETE
	2000	2000	1600	1600	299
	040°	040°			19°
	5 NM	6 NM	3.1 NM	1.6 NM	
GP 3.00° TCH 44					
CATEGORY	A	B	C	D	
LPV DA		258- $\frac{3}{4}$	200 (200- $\frac{3}{4}$ )		
LNAV/VNAV DA		625-1 $\frac{1}{2}$	567 (600-1 $\frac{1}{2}$ )		
LNAV MDA	600-1	542 (600-1)	600-1 $\frac{1}{2}$	542 (600-1 $\frac{1}{2}$ )	
CIRCLING	600-1 528 (600-1)	640-1 568 (600-1)	640-1 $\frac{1}{2}$ 568 (600-1 $\frac{1}{2}$ )	740-2 668 (700-2)	

