

NDB TII 269	APP CRS 250°	Rwy Idg TDZE Apt Elev	4000 785 786
-----------------------	------------------------	-----------------------------	---

NDB RWY 24

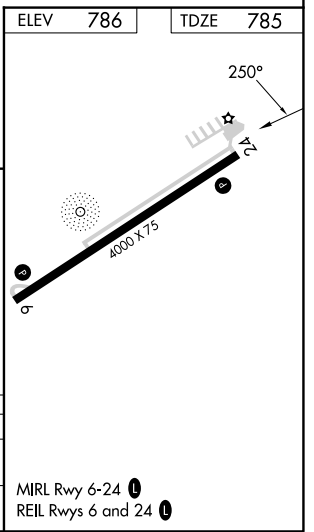
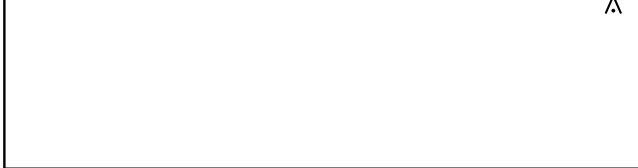
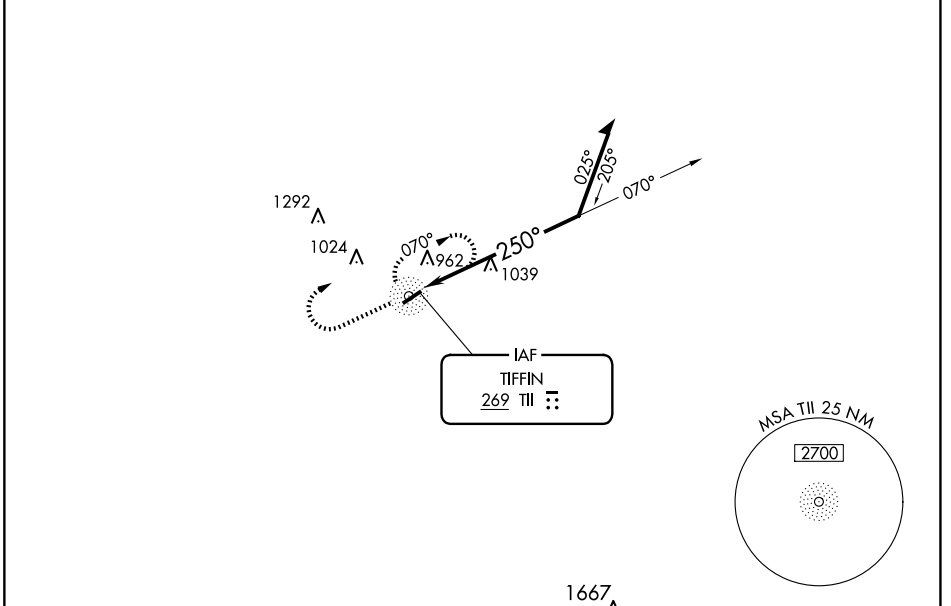
SENECA COUNTY (16G)

▽ Rwy 24 helicopter visibility reduction below 1 SM NA. When local altimeter setting not received, use Findlay altimeter setting and increase all MDAs 60 feet, increase S-24 Cat C visibility $\frac{1}{8}$ SM, and Circling Cat D visibility $\frac{1}{4}$ SM. Straight-in Rwy 24 NA at night, Circling Rwy 24 NA at night.

△ NA

MISSED APPROACH: Climb to 2400 then right turn direct TII NDB and hold.

AWOS-3 127.175	FDY ASOS 132.85	TOLEDO APP CON 120.8 317.55	UNICOM 123.0 (CTAF) 📞
--------------------------	---------------------------	---------------------------------------	--



2400	TII	TII NDB	Remain within 10 NM
2400		070°	2400
		250°	

CATEGORY	A	B	C	D
S-24	1460-1	675 (700-1)	1460-1 $\frac{1}{8}$ 675 (700-1 $\frac{1}{8}$)	1460-2 675 (700-2)
CIRCLING	1460-1	674 (700-1)	1460-2 674 (700-2)	1560-2 $\frac{1}{2}$ 774 (800-2 $\frac{1}{2}$)

MIRL Rwy 6-24 **📞**
REIL Rwy 6 and 24 **📞**

EC-2, 17 APR 2025 to 15 MAY 2025

EC-2, 17 APR 2025 to 15 MAY 2025