

WAAS CH 93816 W31A	APP CRS 308°	Rwy ldg 4494 TDZE 879 Apt Elev 887
--	------------------------	---

RNAV (GPS) RWY 31

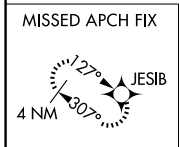
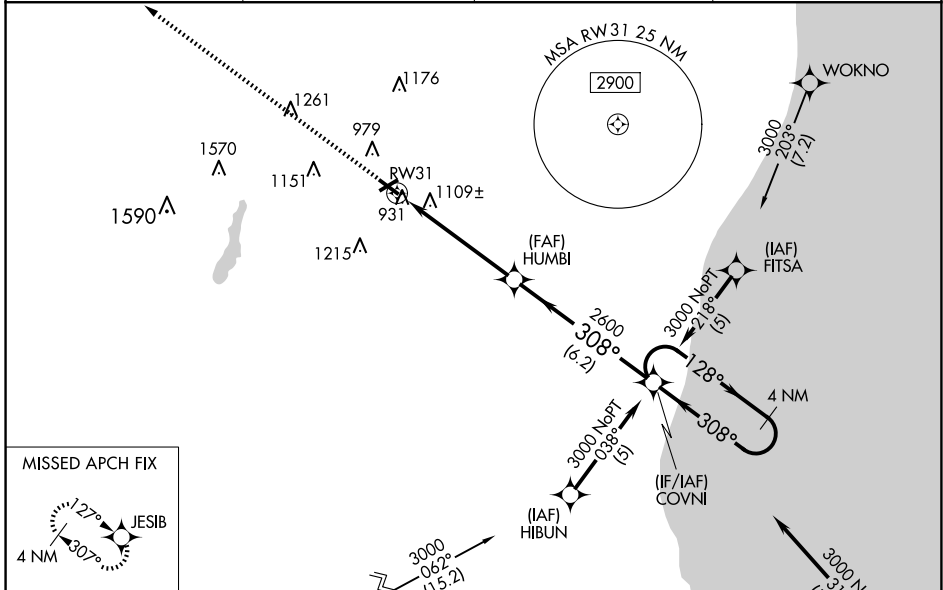
WEST BEND MUNI (E/TB)

RNP APCH - GPS.

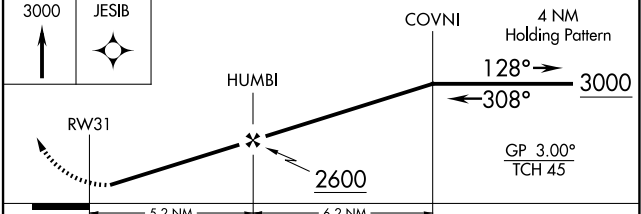
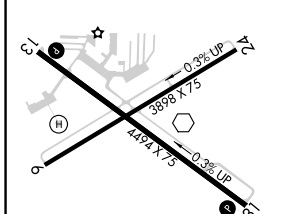
▼ Baro-VNAV NA when using Milwaukee/Lawrence J. Timmerman altimeter setting. For uncompensated Baro-VNAV systems, LNAV/VNAV NA below -16°C or above 47°C. Helicopter visibility reduction below ¼ SM NA. When local altimeter setting not received, use Milwaukee/Lawrence J. Timmerman altimeter setting and increase all DA 64 feet and all MDA 80 feet. Increase LPV all Cats and LNAV and Circling Cats C/D visibility ¼ mile. Circling Rwy 6 NA at night.

▲ MISSED APPROACH: Climb to 3000 direct JESIB and hold.

AWOS-3 120.0	MILWAUKEE APP CON 125.35 307.0	CLNC DEL 124.75	UNICOM 123.05 (CTAF) 0
------------------------	--	---------------------------	----------------------------------



ELEV 887	TDZE 879
----------	----------



CATEGORY	A	B	C	D
LPV DA		1175-1	296 (300-1)	
LNAV/VNAV DA		1482-2	603 (600-2)	
LNAV MDA	1420-1	541 (600-1)	1420-1½ 541 (600-1½)	1420-1¾ 541 (600-1¾)
CIRCLING	1420-1 533 (600-1)	1520-1 633 (700-1)	1560-2 673 (700-2)	1560-2¼ 673 (700-2¼)

EC-3, 17 APR 2025 to 15 MAY 2025

EC-3, 17 APR 2025 to 15 MAY 2025