

UECKR SIX DEPARTURE (RNAV)

AL-5649 (FAA)

WEST BEND MUNI (E/TB)
WEST BEND, WISCONSIN

AWOS-3
120.0
CLNC DEL
124.75
MILWAUKEE DEP CON
125.35 307.0

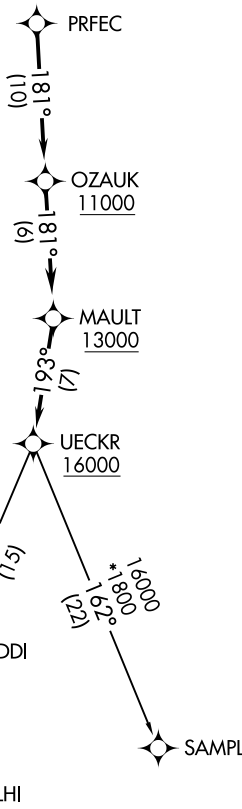


**TOP ALTITUDE:
ASSIGNED BY ATC**

TAKEOFF MINIMUMS

- Rwy 6: Standard.
- Rwy 13: 300-1½ or standard with minimum climb of 260' per NM to 1200.
- Rwy 24: 300-2 or standard with minimum climb of 250' per NM to 1400.
- Rwy 31: 300-1¼ or standard with minimum climb of 220' per NM to 1100.

- NOTE: RNAV 1.
- NOTE: GPS or DME/DME/IRU required.
- NOTE: RADAR required.
- NOTE: Turbojet aircraft maintain 250K until advised by ATC.
- NOTE: Notify ATC if unable to comply with crossing restrictions.



NOTE: Chart not to scale.

DEPARTURE ROUTE DESCRIPTION

Climb on assigned heading for RADAR vectors to PRFEC, thence...

...on track 181° to cross OZAUk at or above 11000, then on track 181° to cross MAULT at or above 13000, then on track 193° to cross UECKR at or above 16000, then on (transition). Maintain ATC assigned altitude, expect filed altitude ten minutes after departure.

DELHI TRANSITION (UECKR6.DELHI)

SAMPL TRANSITION (UECKR6.SAMPL)

UECKR SIX DEPARTURE (RNAV)

EC-3, 17 APR 2025 to 15 MAY 2025

EC-3, 17 APR 2025 to 15 MAY 2025