

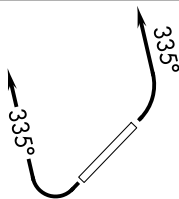
## BNYRD SIX DEPARTURE (RNAV)

AL-5651 (FAA)

SCOTTSDALE (SDL)  
SCOTTSDALE, ARIZONA

PHOENIX DEP CON  
120.7 239.0  
ATIS  
118.6  
CLNC DEL  
124.8  
GND CON  
121.6  
SCOTTSDALE TOWER ★  
119.9

**TOP ALTITUDE:  
ASSIGNED BY ATC**

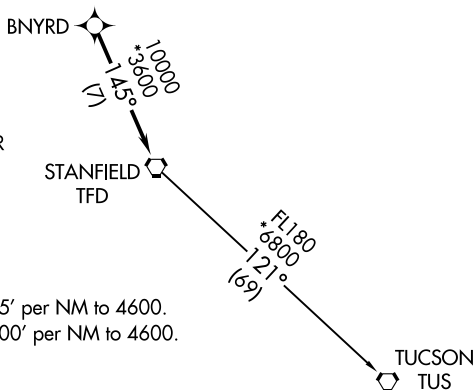


NOTE: RNAV 1.  
NOTE: Turbojets and turboprops only.  
NOTE: RADAR required.  
NOTE: GPS required.  
NOTE: Aircraft departing KGEU and KGYR  
ATC assigned only.  
NOTE: Rwy 21: Do not exceed 210K until  
established on assigned heading.

## TAKEOFF MINIMUMS

Rwy 3: Standard with minimum climb of 445' per NM to 4600.  
Rwy 21: Standard with minimum climb of 300' per NM to 4600.

NOTE: Chart not to scale.



## DEPARTURE ROUTE DESCRIPTION

TAKEOFF RUNWAY 3: Climbing left turn heading 335° or as assigned by ATC, thence. . .

TAKEOFF RUNWAY 21: Climbing right turn heading 335° or as assigned by ATC, thence. . . .

...expect RADAR vectors to BNYRD, then on track 145° to TFD VORTAC, then on (transition), maintain ATC assigned altitude, expect filed altitude 3 minutes after departure.

TUCSON TRANSITION (BNYRD6.TUS)

## BNYRD SIX DEPARTURE (RNAV)

(BNYRD6.BNYRD) 24MAY18

SCOTTSDALE, ARIZONA  
SCOTTSDALE (SDL)

SW-4, 17 APR 2025 to 15 MAY 2025

SV-4, 17 APR 2025 to 15 MAY 2025