

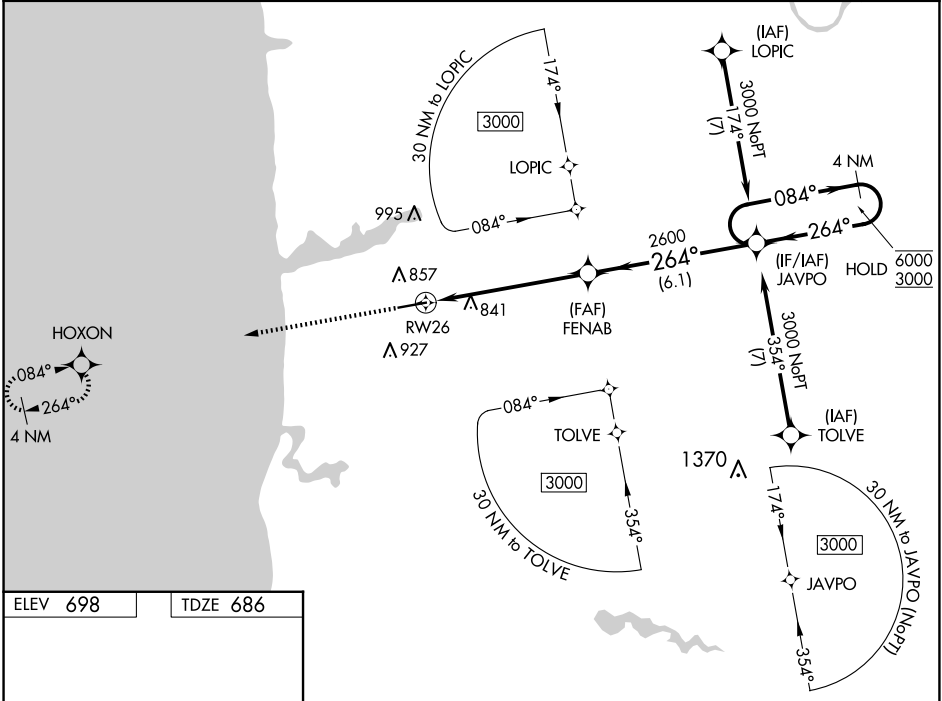
WAAS CH 53402 W26A	APP CRS 264°	Rwy Idg TDZE Apt Elev	6002 686 698
----------------------------------------	------------------------	-----------------------------	-----------------------------------------

RNAV (GPS) RWY 26

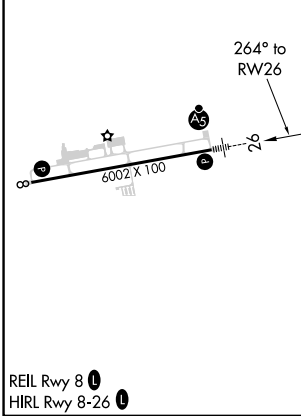
WEST MICHIGAN RGNL (BIV)

RNP APCH.	MALSR	MISSED APPROACH: Climb to 2700 direct HOXON and hold.
<p>▽ For uncompensated Baro-VNAV systems, LNAV/VNAV NA below -16°C or above 54°C. ▲ For inoperative ALS, increase LNAV/VNAV all Cats visibility to 1 SM; increase LNAV Cat C visibility to 1½ SM.</p>		

ASOS 119.025	GREAT LAKES APP CON* 133.825 290.35	CLNC DEL 123.95	UNICOM 123.05 (CTAF)
------------------------	-----------------------------------------------	---------------------------	--------------------------------



ELEV 698	TDZE 686
----------	----------



2700	HOXON	*LNAV only	JAVPO	4 NM Holding Pattern
			FENAB	
		*1.2 NM to RW26	2600	
		1.2	2600	
		4.7 NM	6.1 NM	
				GP 3.00° TCH 32
CATEGORY	A	B	C	D
LPV DA	886-½	200 (200-½)		NA
LNAV/VNAV DA	1040-⅝	354 (400-⅝)		NA
LNAV MDA	1100-½	414 (500-½)	1100-¾ 414 (500-¾)	NA
CIRCLING	1200-1 502 (600-1)	1240-1 542 (600-1)	1240-1½ 542 (600-1½)	NA

EC-1, 17 APR 2025 to 15 MAY 2025

EC-1, 17 APR 2025 to 15 MAY 2025