

WAAS CH 86216 W17A	APP CRS 175°	Rwy Idg TDZE Apt Elev	5501 1433 1433
--	------------------------	-----------------------------	---

RNAV (GPS) RWY 17

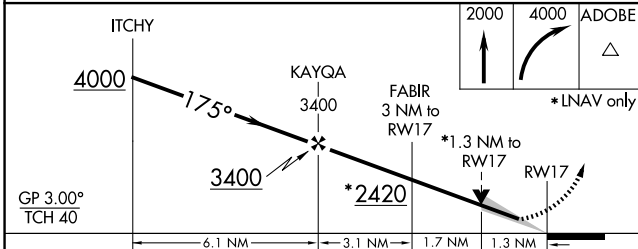
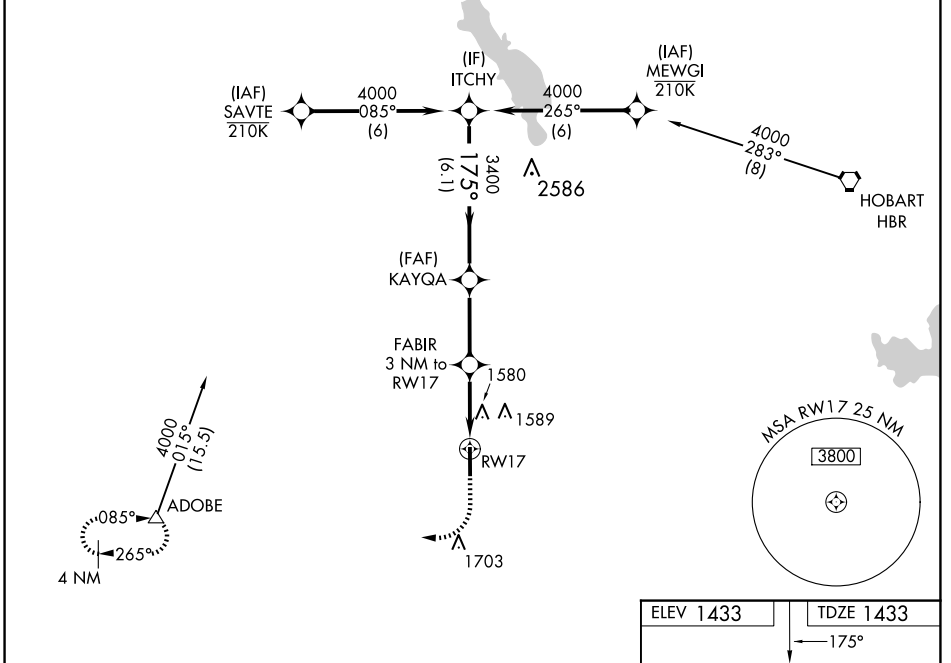
ALTUS/QUARTZ MOUNTAIN RGNL (A.X.S)

⚠ For uncompensated Baro-VNAV systems, LNAV/VNAV NA below -17°C (2°F) or above 54°C (130°F). Baro-VNAV and VDP NA when using Hobart Rgnl altimeter setting. DME/DME RNP-0.3 NA. When local altimeter setting not received, use Hobart Rgnl altimeter setting and increase LPV DA to 1754 feet and LNAV/VNAV DA to 1997 feet and increase all MDA 80 feet. Increase LPV, LNAV/VNAV all Cats and Circling Cat C visibility ¼ mile, increase LNAV Cat C visibility ½ mile.

ODALS

MISSED APPROACH: Climb to 2000 then climbing right turn to 4000 direct ADOBE and hold.

AWOS-3PT 118.825	ALTUS APP CON* 125.1 353.7	UNICOM 122.8 (CTAF) 0
----------------------------	--------------------------------------	---------------------------------



ELEV 1433	TDZE 1433
-----------	-----------

Vertical profile diagram showing altitudes of 2000, 4000, and 5501 feet, and distances of 1.3 NM and 0.3% UP.

REIL Rwy 35 0
MIRL Rwy 17-35 0

CATEGORY	A	B	C	D
LPV DA	1683-7/8	250 (300-7/8)		NA
LNAV/VNAV DA	1926-1 3/4	493 (500-1 3/4)		NA
LNAV MDA	1880-1	447 (500-1)	1880-1 3/8 447 (500-1 3/8)	NA
C CIRCLING	1920-1	487 (500-1)	2020-1 1/2 587 (600-1 1/2)	NA

SC-1, 17 APR 2025 to 15 MAY 2025

SC-1, 17 APR 2025 to 15 MAY 2025