

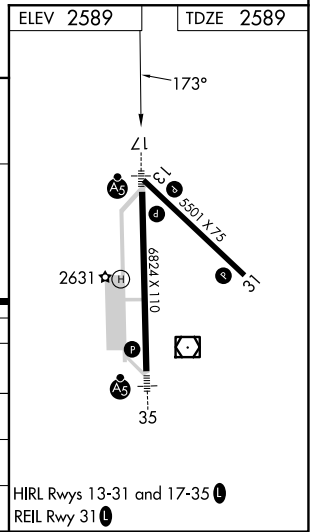
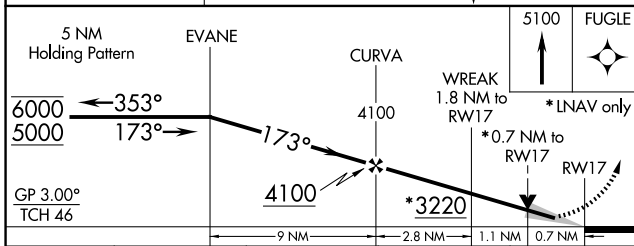
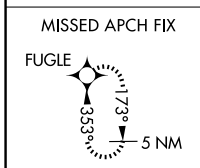
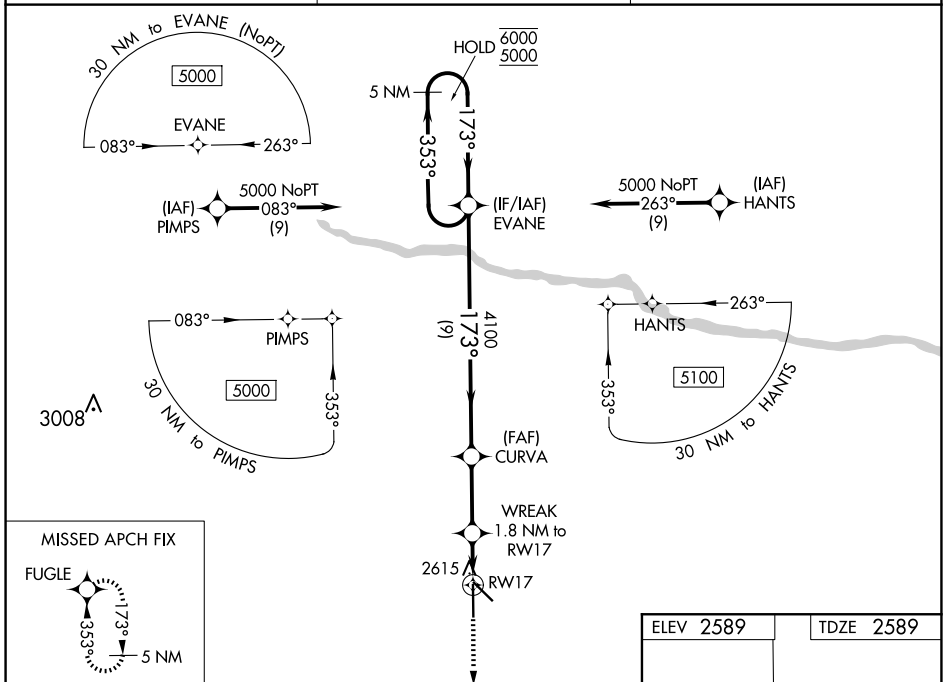
WAAS CH <b>70417</b> <b>W17A</b>	APP CRS <b>173°</b>	Rwy Idg TDZE Apt Elev	<b>6824</b> <b>2589</b> <b>2589</b>
--	------------------------	-----------------------------	---

# RNAV (GPS) RWY 17

AINSWORTH RGNL (A.N.W)

RNP APCH.	MALSR	MISSED APPROACH: Climb to 5100 direct FUGLE and hold.
<p>▼ For uncompensated Baro-VNAV systems, LNAV/VNAV NA below -20°C or above 54°C. For inop ALS, increase LNAV/VNAV all Cats visibility to ¾ SM, and LNAV Cats C/D visibility to ½ SM.</p>		

AWOS-3 <b>118.325</b>	DENVER CENTER <b>127.95 338.2</b>	UNICOM <b>122.8</b> (CTAF)
--------------------------	--------------------------------------	-------------------------------



CATEGORY	A	B	C	D
LPV DA		2789-½	200 (200-½)	
LNAV/VNAV DA		2839-½	250 (300-½)	
LNAV MDA		2880-½	291 (300-½)	
CIRCLING	3000-1 411 (500-1)	3040-1 451 (500-1)	3040-1½ 451 (500-1½)	3200-2 611 (700-2)

NC-2, 17 APR 2025 to 15 MAY 2025

NC-2, 17 APR 2025 to 15 MAY 2025