

WAAS CH 69304 W31A	APP CRS 308°	Rwy Idg TDZE Apt Elev	4300 897 900
--	------------------------	-----------------------------	---

RNAV (GPS) RWY 31

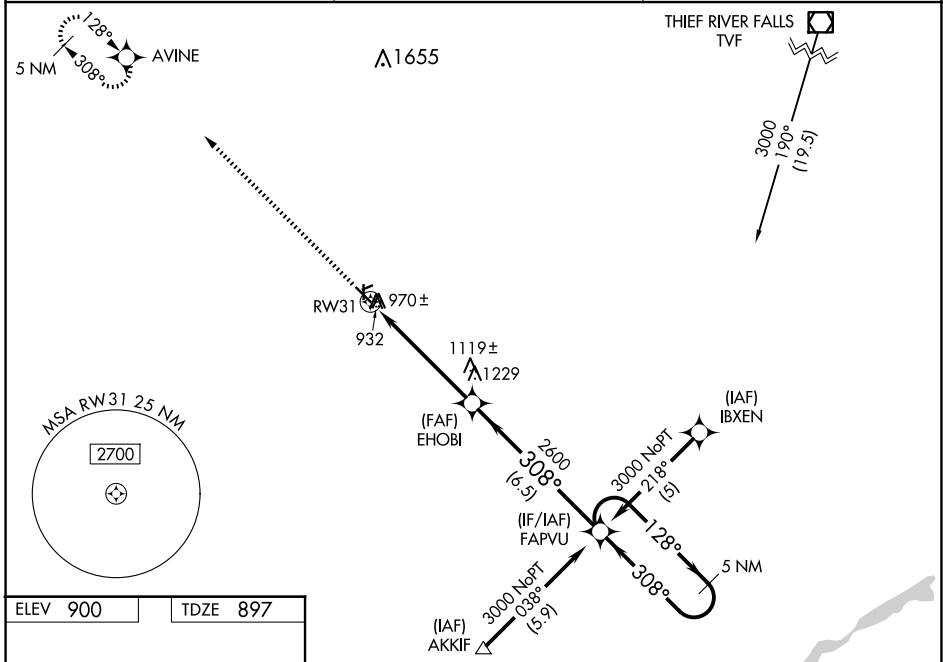
CROOKSTON MUNI/KIRKWOOD FLD (CKN)

RNP APCH.

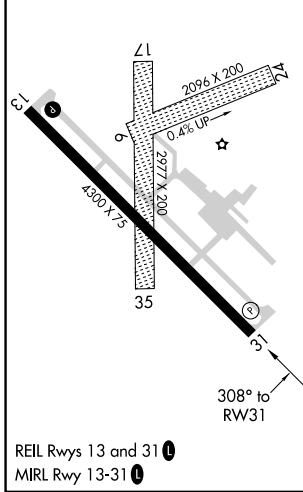
Baro-VNAV NA when using Grand Forks altimeter setting. For uncompensated Baro-VNAV systems, LNAV/VNAV NA below -16°C (4°F) or above 54°C (130°F). When local altimeter setting not received, use Grand Forks altimeter setting and increase LPV DA to 1219 feet and LNAV/VNAV DA to 1382 feet, increase all MDAs 80 feet and Circling Cat C visibility ¼ SM. Visibility reduction by helicopters NA. Circling Rws 6, 24, 17, 35 NA at night.

MISSED APPROACH:
Climb to 3000 direct AVINE and hold.

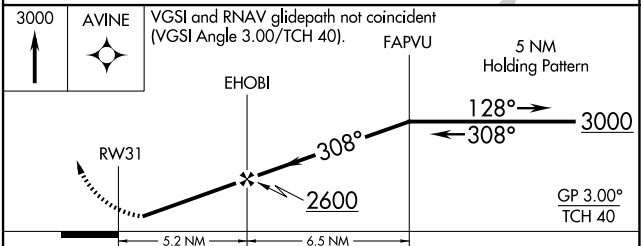
AWOS-3 126.425	GRAND FORKS APP CON* 118.1 318.1	UNICOM 122.7 (CTAF)
--------------------------	--	-------------------------------



ELEV 900	TDZE 897
----------	----------



REIL Rws 13 and 31
MIRL Rwy 13-31



CATEGORY	A	B	C	D
LPV DA	1157-1 260 (300-1)			NA
LNAV/VNAV DA	1320-1½ 423 (500-1½)			NA
LNAV MDA	1380-1	483 (500-1)	1380-1¼ 483 (500-1¼)	NA
CIRCLING	1380-1	480 (500-1)	1480-1½ 580 (600-1½)	NA

NC-1, 17 APR 2025 to 15 MAY 2025

NC-1, 17 APR 2025 to 15 MAY 2025