

LOC/DME I-OJC 111.1 Chan 48	APP CRS 176°	Rwy Idg TDZE Apt Elev	4097 1096 1096
---	------------------------	-----------------------------	---

LOC RWY 18

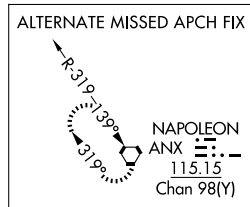
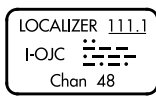
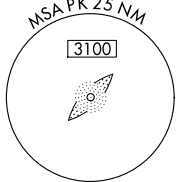
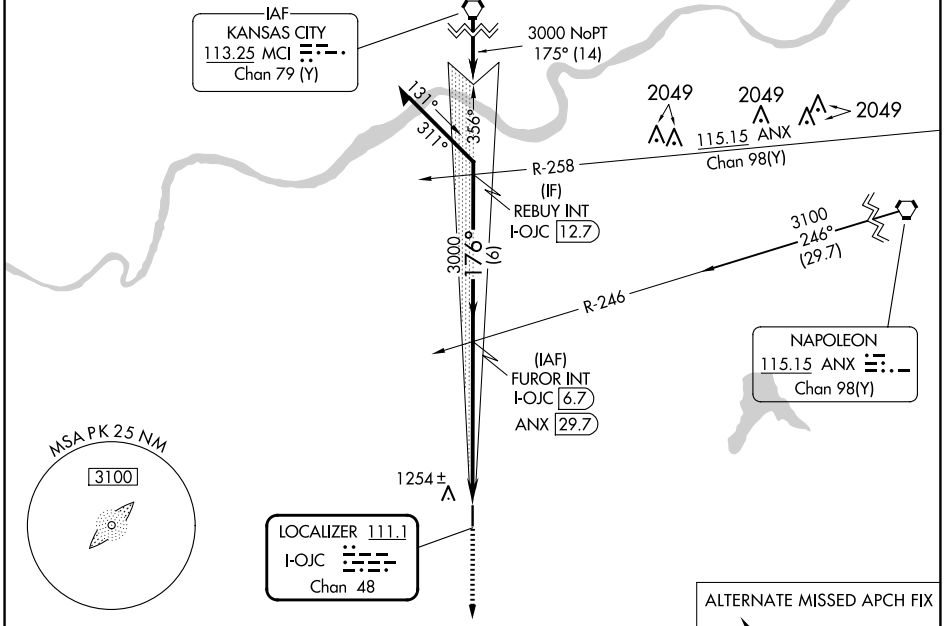
JOHNSON COUNTY EXEC (OJC)

ADF required.

▲ NA

MISSED APPROACH: Climb to 2700 direct HERBB LOM and hold.

ATIS 119.35	KANSAS CITY APP CON 118.9 251.075	EXECUTIVE TOWER * 126.0 (CTAF) 225.4	GND CON 121.6	UNICOM 122.95
-----------------------	---	--	-------------------------	-------------------------



ELEV 1096 **D** TDZE 1096

176°

81

1151

TWR 1157

4097 X 75

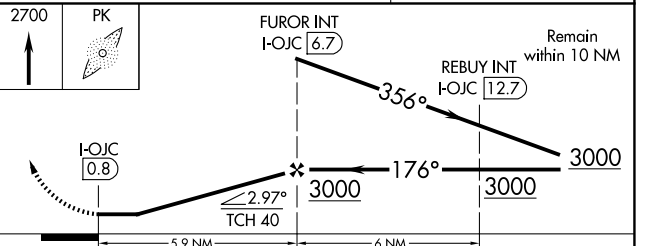
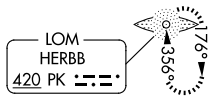
1.1% UP

36

MIRL Rwy 18-36

FAF to MAP 5.9 NM

Knots	60	90	120	150	180
Min:Sec	5:54	3:56	2:57	2:22	1:58



CATEGORY	A	B	C	D
S-18	1540-1	444 (500-1)	1540-1 ³ / ₈ 444 (500-1 ³ / ₈)	NA
C CIRCLING	1620-1	524 (600-1)	1620-1 ¹ / ₂ 524 (600-1 ¹ / ₂)	NA

NC-2, 17 APR 2025 to 15 MAY 2025

NC-2, 17 APR 2025 to 15 MAY 2025