

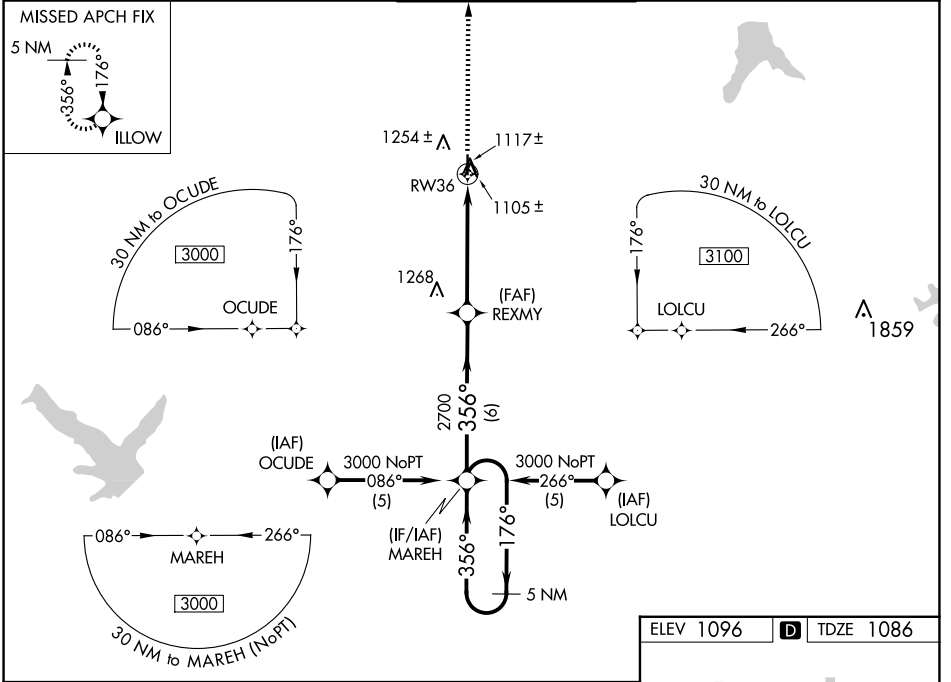
WAAS CH <b>82700</b> <b>W36A</b>	APP CRS <b>356°</b>	Rwy Idg <b>4097</b> TDZE <b>1086</b> Apt Elev <b>1096</b>
--	------------------------	---

# RNAV (GPS) RWY 36

JOHNSON COUNTY EXEC (OJC)

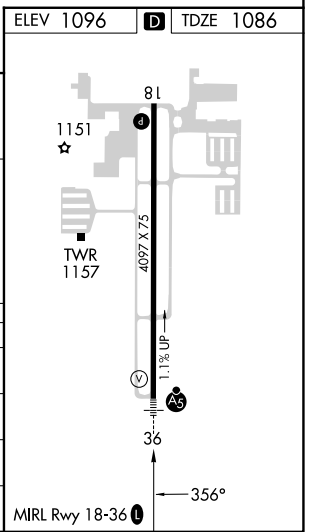
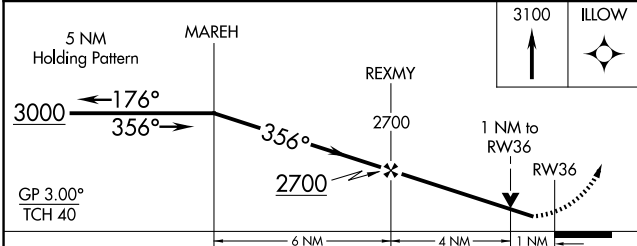
RNP APCH - GPS.	MALSR	MISSED APPROACH: Climb to 3100 direct ILLOW and hold.
<p>▼ For uncompensated Baro-VNAV systems, LNAV/VNAV NA below -17°C or above 54°C. Rwy 36 helicopter visibility reduction below ¾ SM NA. For inop ALS, increase LPV, LNAV/VNAV and LNAV all Cats visibility to 1 SM.</p>		

ATIS <b>119.35</b>	KANSAS CITY APP CON <b>118.9 251.075</b>	EXECUTIVE TOWER* <b>126.0 (CTAF) 225.4</b>	GND CON <b>121.6</b>	UNICOM <b>122.95</b>
-----------------------	---	---	-------------------------	-------------------------



NC-2, 17 APR 2025 to 15 MAY 2025

NC-2, 17 APR 2025 to 15 MAY 2025



CATEGORY	A	B	C	D
LPV DA	1336-¾	250 (300-¾)		NA
LNAV/VNAV DA	1355-¾	269 (300-¾)		NA
LNAV MDA	1400-¾	314 (400-¾)		NA
<b>C</b> CIRCLING	1620-1	524 (600-1)	1620-1½ 524 (600-1½)	NA