

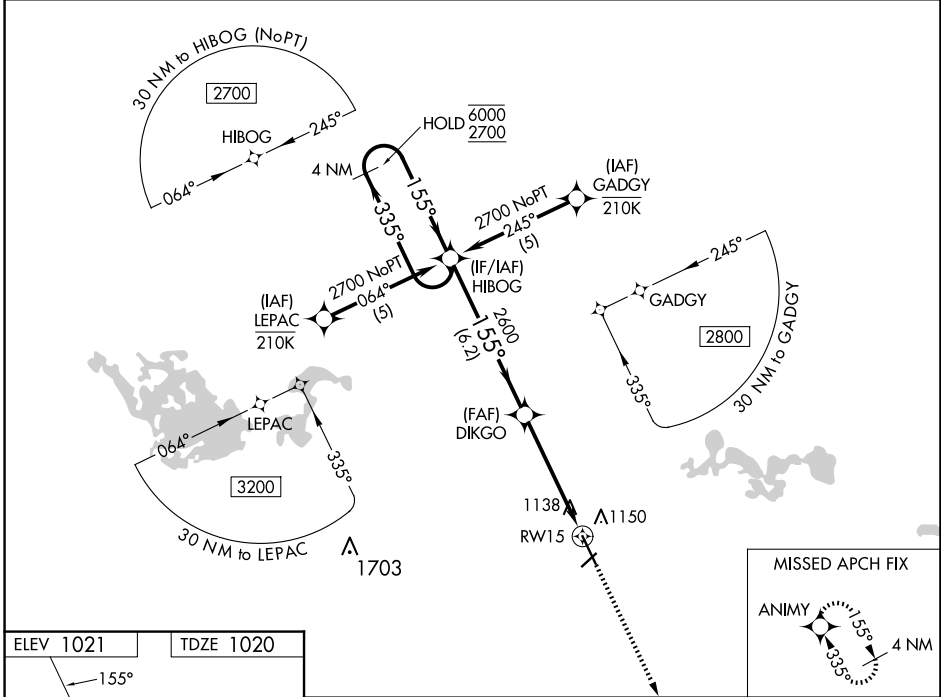
WAAS CH <b>45615</b> <b>W15A</b>	APP CRS <b>155°</b>	Rwy ldg TDZE Apt Elev <b>6600</b> <b>1020</b> <b>1021</b>
--	------------------------	--

# RNAV (GPS) RWY 15

MANKATO RGNL (MKT)

RNP APCH - GPS.	MISSED APPROACH: Climb to 2900 direct ANIMY and hold.
<p><b>▼</b> For uncompensated Baro-VNAV systems, LNAV/VNAV NA below -17°C or above 54°C. Rwy 15 helicopter visibility reduction below 1 SM NA.</p>	

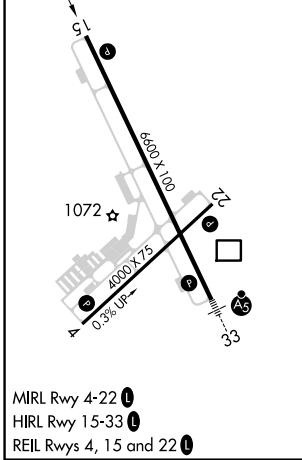
AWOS-3PT <b>118.175</b>	MINNEAPOLIS CENTER <b>135.0 306.9</b>	UNICOM <b>122.725 (CTAF) 0</b>
----------------------------	--	-----------------------------------



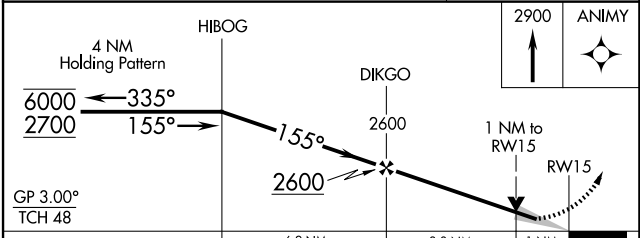
NC-1, 17 APR 2025 to 15 MAY 2025

NC-1, 17 APR 2025 to 15 MAY 2025

ELEV 1021	TDZE 1020
-----------	-----------



MIRL Rwy 4-22 **0**  
HIRL Rwy 15-33 **0**  
REIL Rws 4, 15 and 22 **0**



CATEGORY	A	B	C	D
LPV DA		1270-1	250 (300-1)	
LNAV/VNAV DA		1299-1	279 (300-1)	
LNAV MDA		1400-1	380 (400-1)	
CIRCLING	1460-1	1480-1	1600-1½	1600-2
	439 (500-1)	459 (500-1)	579 (600-1½)	579 (600-2)