

| | | | |
|--|------------------------|---|-------------|
| WAAS CH 45733 W17A | APP CRS 168° | Rwy Idg TDZE 162 Apt Elev 162 | 4990 |
|--|------------------------|---|-------------|

RNAV (GPS) RWY 17

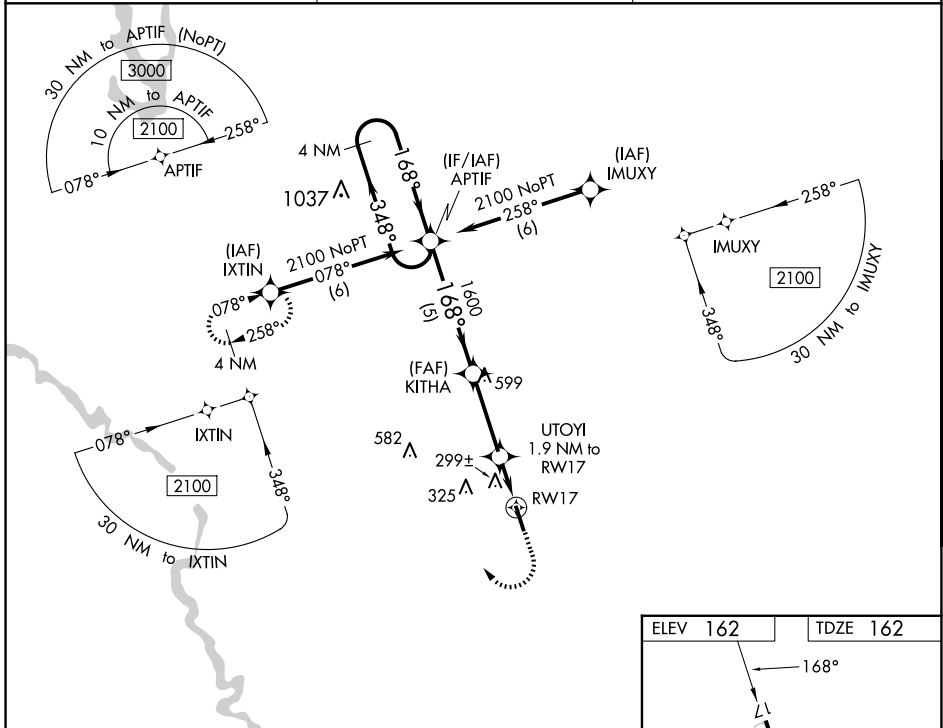
ALLENDALE COUNTY (A.Q.X)

RNP APCH.

▼ For uncompensated Baro-VNAV systems, LNAV/VNAV NA below -15°C or above 54°C.
▲ Rwy 17 helicopter visibility reduction below 3/4 SM NA. Baro-VNAV and VDP NA when using Augusta Rgnl at Bush Fld altimeter setting. When local altimeter setting not received, use Augusta Rgnl at Bush Fld altimeter setting and increase all DA 99 feet and all MDA 100 feet, increase LPV all Cats visibility 1/4 mile, LNAV/VNAV all Cats 3/8 mile.

MISSED APPROACH: Climb to 1000 then climbing right turn to 2100 direct IXTIN and hold.

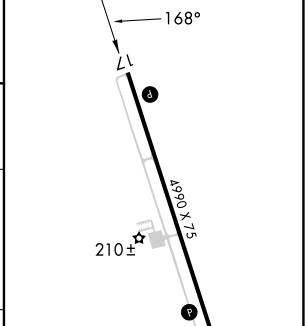
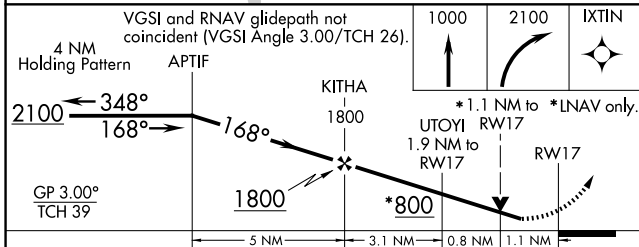
| | | |
|---------------------------|---|---------------------------------|
| AWOS-3PT 118.95 | JACKSONVILLE CENTER 132.925 363.2 | UNICOM 122.8 (CTAF) 0 |
|---------------------------|---|---------------------------------|



SE-2, 17 APR 2025 to 15 MAY 2025

SE-2, 17 APR 2025 to 15 MAY 2025

| | |
|----------|----------|
| ELEV 162 | TDZE 162 |
|----------|----------|



| CATEGORY | A | B | C | D |
|--------------|-------------|-----------------|---|----|
| LPV DA | 478-1 1/8 | 316 (400-1 1/8) | | NA |
| LNAV/VNAV DA | 562-1 3/8 | 400 (400-1 3/8) | | NA |
| LNAV MDA | 560-1 | 398 (400-1) | | NA |
| CIRCLING | 620-1 | 640-1 | | NA |
| | 458 (500-1) | 478 (500-1) | | |

MIRL Rwy 17-35 0