

|  |                        |   |             |
|--|------------------------|---|-------------|
| WAAS<br>CH <b>42813</b><br><b>W36A</b> | APP CRS<br><b>357°</b> | Rwy Idg<br>TDZE <b>192</b><br>Apt Elev <b>213</b> | <b>5500</b> |
|--|------------------------|---|-------------|

# RNAV (GPS) RWY 36

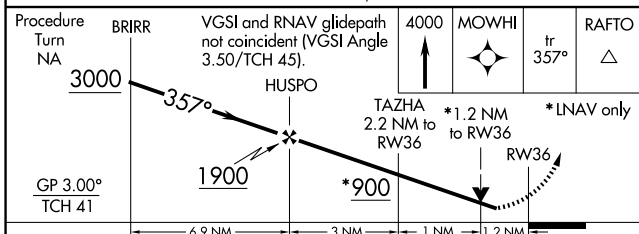
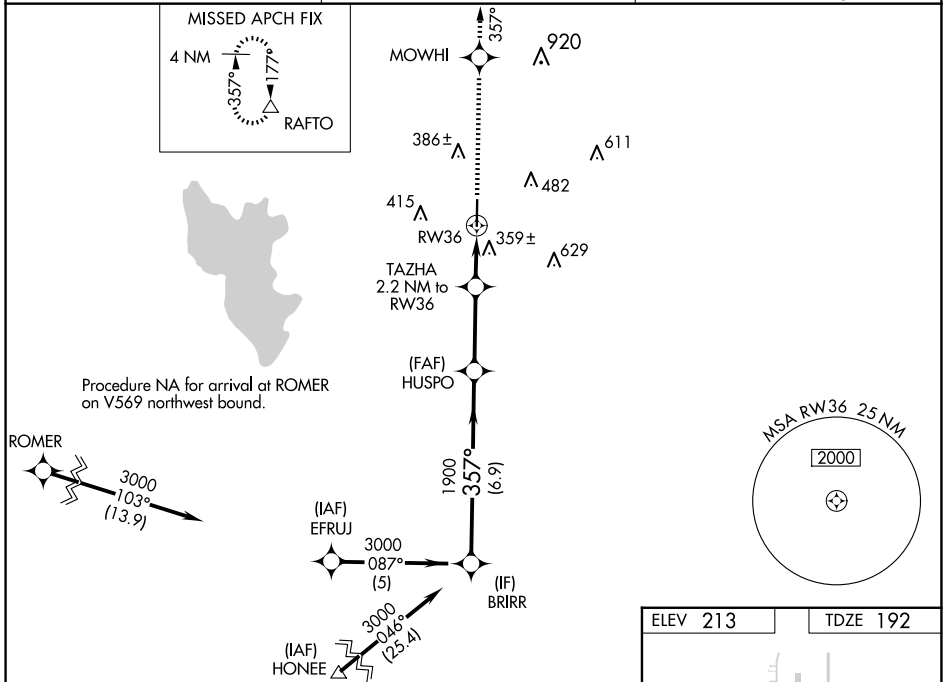
JASPER COUNTY/BELL FLD (JAS)

RNP APCH-GPS

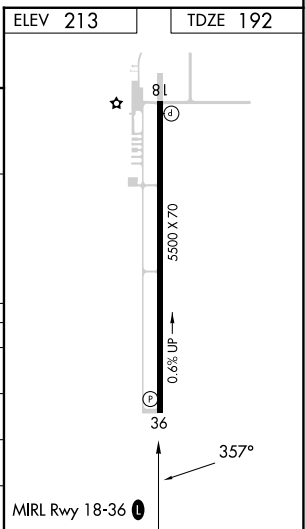
**▼** Baro-VNAV NA when using De Ridder altimeter setting. For uncompensated Baro-VNAV systems, LNAV/VNAV NA below -15°C or above 54°C. Rwy 36 helicopter visibility reduction below ¼ SM NA. VDP NA when using De Ridder altimeter setting. When local altimeter setting not received, use De Ridder altimeter setting and increase LPV DA to 681 feet and all visibilities ¼ SM, increase LNAV/VNAV DA to 762 feet and all visibilities ¼ SM, increase all MDAs 100 feet and LNAV visibility Cat C ½ SM, and Circling visibility Cat C ¼ SM.

**MISSED APPROACH:**  
Climb to 4000 direct MOWHI and via track 357° to RAFTO and hold.

|                          |  |                                 |
|--------------------------|--|---------------------------------|
| AWOS-3<br><b>118.375</b> | HOUSTON CENTER<br><b>126.95 363.05</b> | UNICOM<br><b>122.8 (CTAF) ①</b> |
|--------------------------|--|---------------------------------|



| CATEGORY     | A      | B           | C                      | D  |
|--------------|--------|-------------|------------------------|----|
| LPV DA       | 594-1½ |             | 402 (400-1½)           | NA |
| LNAV/VNAV DA | 675-1¾ |             | 483 (500-1¾)           | NA |
| LNAV MDA     | 680-1  | 488 (500-1) | 680-1¾<br>488 (500-1¾) | NA |
| CIRCLING     | 740-1  | 527 (600-1) | 800-1½<br>587 (600-1½) | NA |



SC-5, 17 APR 2025 to 15 MAY 2025

SC-5, 17 APR 2025 to 15 MAY 2025