

LOC I-BZQ 111.5	APP CRS 320°	Rwy Idg TDZE Apt Elev	5701 179 187
---------------------------	------------------------	-----------------------------	---

ILS or LOC RWY 32

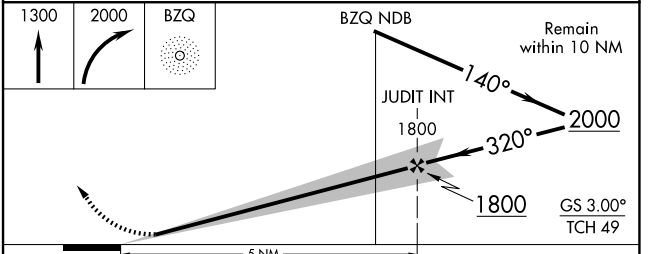
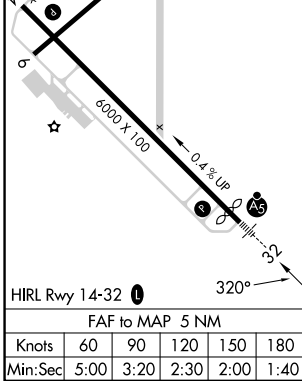
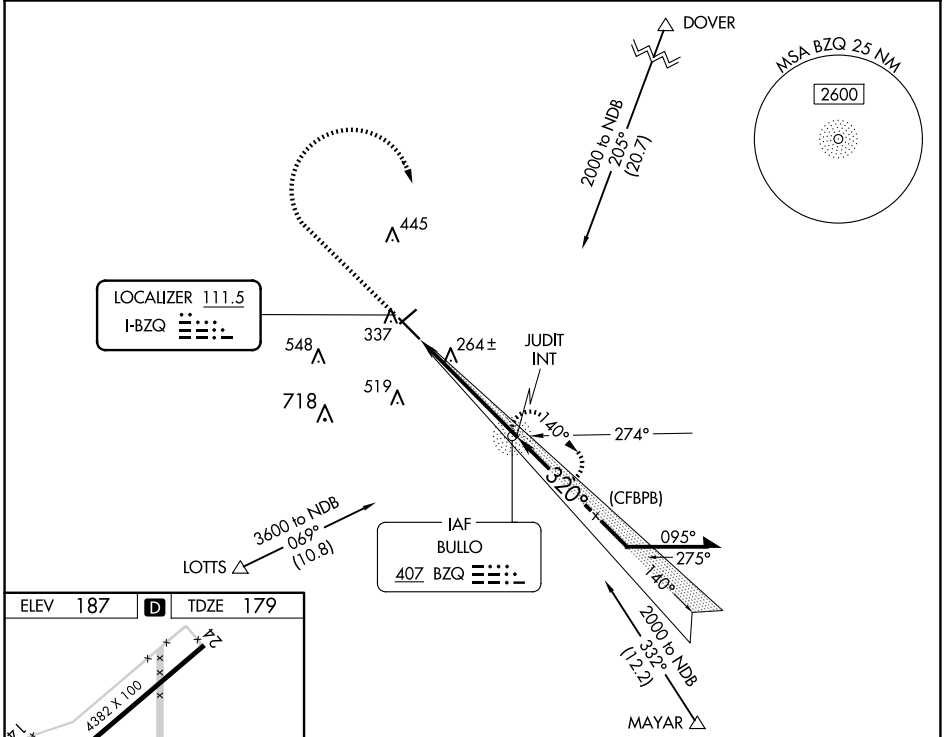
STATESBORO-BULLOCH COUNTY (TBR)

ADF required.

▼ Circling to Rwy 6, 24 NA at night. When local altimeter setting not received, use JYL altimeter setting and increase S-ILS 32 DA to 408 feet; increase all MDAs 40 feet; and Circling visibility Cat C ¼ SM. For inop ALS, increase S-LOC 32 Cat C and D visibility to 1 SM.

▲ MALSR MISSED APPROACH: Climb to 1300 then climbing right turn to 2000 direct BZQ NDB and hold.

AWOS-3 119.025	SAVANNAH APP CON ★ 118.4 354.0	UNICOM 122.725 (CTAF)
--------------------------	--	---------------------------------



CATEGORY	A	B	C	D
S-ILS 32	379-½ 200 (200-½)			
S-LOC 32	520-½ 341 (400-½)	520-5/8 341 (400-5/8)		
CIRCLING	640-1 453 (500-1)	740-1 553 (600-1)	840-1¾ 653 (700-1¾)	860-2¼ 673 (700-2¼)

SE-4, 17 APR 2025 to 15 MAY 2025

SE-4, 17 APR 2025 to 15 MAY 2025