

WAAS CH <b>49144</b> <b>W14A</b>	APP CRS <b>140°</b>	Rwy Idg TDZE Apt Elev	<b>6000</b> <b>181</b> <b>187</b>
--	------------------------	-----------------------------	---

# RNAV (GPS) RWY 14

STATESBORO-BULLOCH COUNTY (TBR)

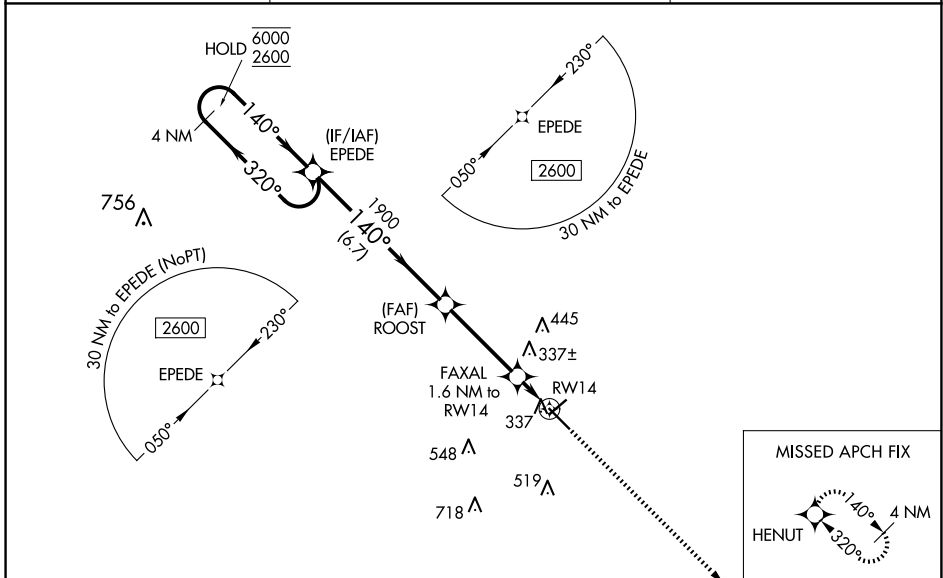
RNP APCH-GPS.

⚠ Circling to Rwy 6/24 NA at night. Baro-VNAV and VDP NA when using Sylvania altimeter setting.

⚠ Rwy 14 helicopter visibility reduction below  $\frac{3}{4}$  SM NA. For uncompensated Baro-VNAV systems, LNAV/VNAV NA below  $-15^{\circ}\text{C}$  or above  $54^{\circ}\text{C}$ . When local altimeter setting not received, use Sylvania altimeter setting and increase LPV DA to 525 feet and all visibilities  $\frac{1}{8}$  SM. Increase LNAV/VNAV DA to 547 feet; increase all MDAs 40 feet and LNAV visibility Cat C/D  $\frac{1}{4}$  SM, and Circling visibility Cat C  $\frac{1}{4}$  SM.

MISSED APPROACH: Climb to 2600 direct HENUT and hold.

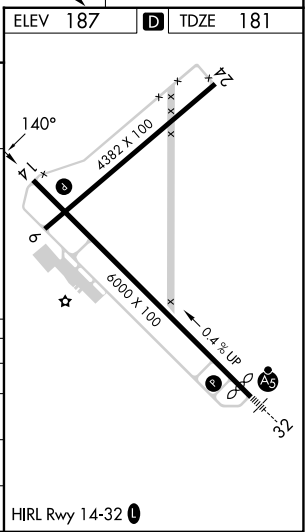
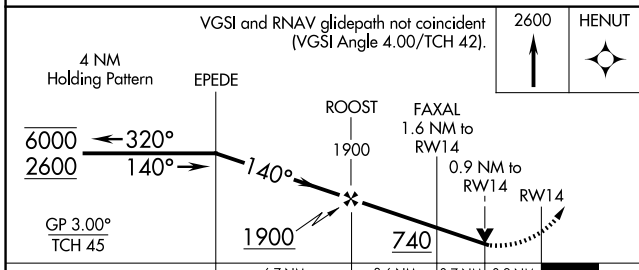
AWOS-3 <b>119.025</b>	SAVANNAH APP CON* <b>118.4 354.0</b>	UNICOM <b>122.725 (CTAF)</b>
--------------------------	---	---------------------------------



SE-4, 17 APR 2025 to 15 MAY 2025

SE-4, 17 APR 2025 to 15 MAY 2025

ELEV 187	<b>D</b> TDZE 181
----------	-------------------



CATEGORY	A	B	C	D
LPV DA		496- $\frac{7}{8}$	315 (400- $\frac{7}{8}$ )	
LNAV/VNAV DA		518-1	337 (400-1)	
LNAV MDA	600-1	419 (500-1)	600- $1\frac{1}{8}$	419 (500- $1\frac{1}{8}$ )
<b>C</b> CIRCLING	640-1 453 (500-1)	740-1 553 (600-1)	840- $1\frac{3}{4}$ 653 (700- $1\frac{3}{4}$ )	860- $2\frac{1}{4}$ 673 (700- $2\frac{1}{4}$ )

HIRL Rwy 14-32 **D**