


WAAS CH <b>81829</b> <b>W32A</b>	APP CRS <b>320°</b>	Rwy Idg TDZE Apt Elev	<b>5701</b> <b>179</b> <b>187</b>
--	------------------------	-----------------------------	---

# RNAV (GPS) RWY 32

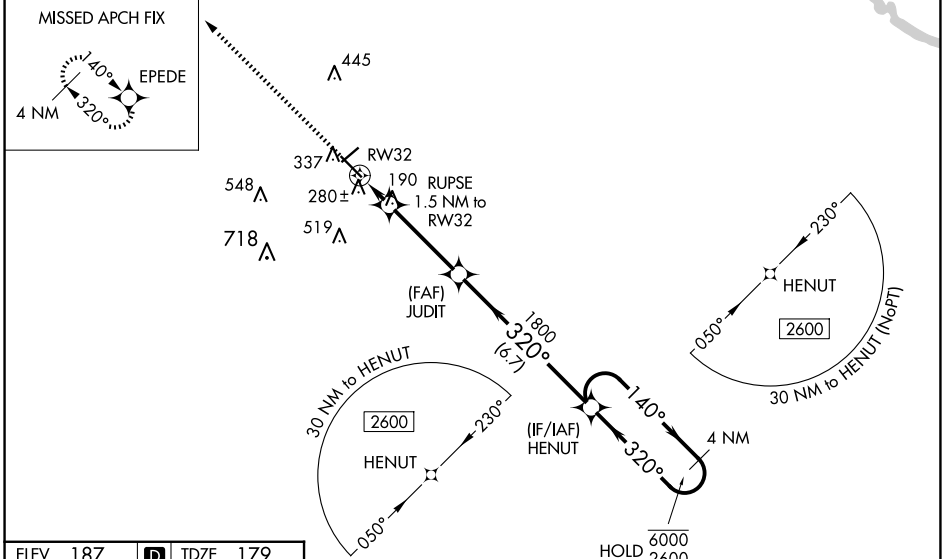
STATESBORO-BULLOCH COUNTY (TBR)

RNP APCH-GPS.

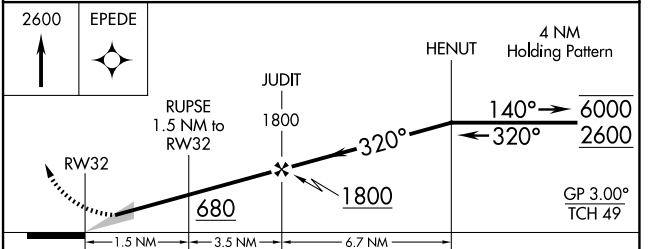
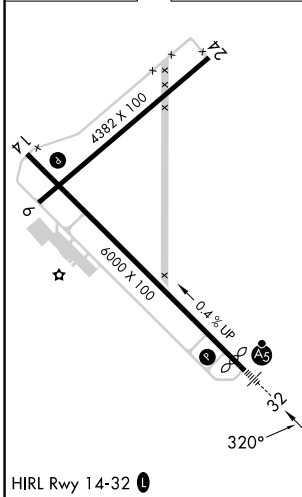
⚠ Circling to Rwy 6/24 NA at night. Baro-VNAV NA when using Sylvania altimeter setting.  
 ⚠ For uncompensated Baro-VNAV systems, LNAV/VNAV NA below -15°C or above 54°C.  
 For inop ALS. Increase LNAV/VNAV all Cats visibility to ¾ SM and LNAV Cats C/D to 1½ SM.  
 When local altimeter setting not received. Use Sylvania altimeter setting and increase LPV DA to 408 feet; increase LNAV/VNAV DA to 490 feet; increase all MDAs 40 feet and LNAV visibility Cat C/D ½ SM, and Circling visibility Cat C ¼ SM. For inop ALS when using Sylvania altimeter setting, increase LNAV/VNAV all Cats visibility to ¾ SM and LNAV Cat C/D to 1½ SM.

MALSRL  
 MISSED APPROACH: Climb to 2600 direct EPEDE and hold.

AWOS-3 <b>119.025</b>	SAVANNAH APP CON* <b>118.4 354.0</b>	UNICOM <b>122.725 (CTAF) 0</b>
--------------------------	---	-----------------------------------



ELEV 187	<b>D</b>	TDZE 179
----------	----------	----------



CATEGORY	A	B	C	D
LPV DA	379-½		200 (200-½)	
LNAV/VNAV DA	461-½		282 (300-½)	
LNAV MDA	540-½		540-⅝	
<b>C</b> CIRCLING	640-1	740-1	840-1¾	860-2¼
	453 (500-1)	553 (600-1)	653 (700-1¾)	673 (700-2¼)