

APP CRS	Rwy Idg	3395
092°	TDZE	617
	Apt Elev	620

RNAV (GPS) RWY 9

LANSING MUNI (IGQ)

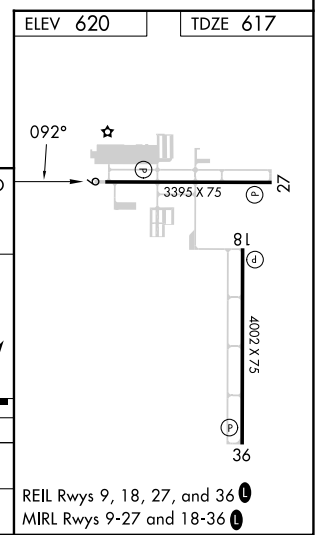
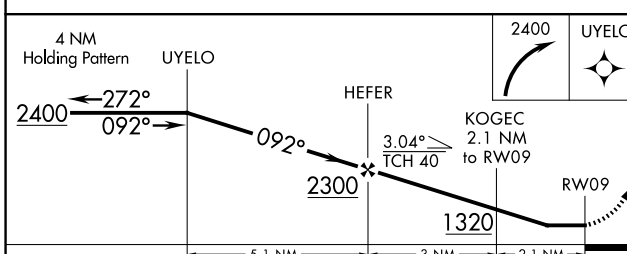
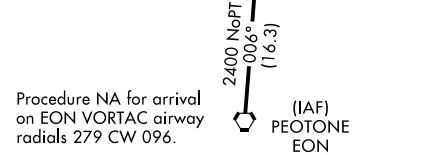
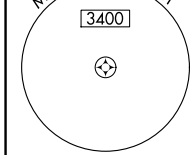
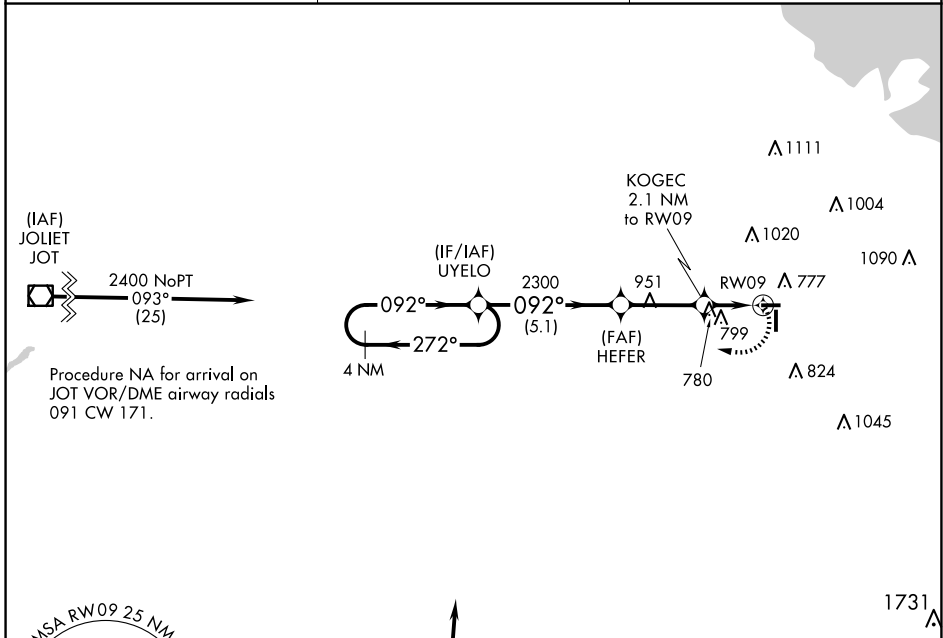
▼ Rwy 9 Straight-in and Circling minimums NA at night.
Rwy 9 helicopter visibility reduction below 1 SM NA.
DME/DME RNP-0.3 NA.

MISSED APPROACH: Climbing right turn to 2400 direct UYELO and hold.

AWOS-3PT
124.925

CHICAGO APP CON
128.2 285.6

UNICOM
122.7 (CTAF) 0



CATEGORY	A	B	C	D
LNNAV MDA	1080-1	463 (500-1)		NA
CIRCLING	1140-1	520 (600-1)		NA

EC-3, 17 APR 2025 to 15 MAY 2025

EC-3, 17 APR 2025 to 15 MAY 2025