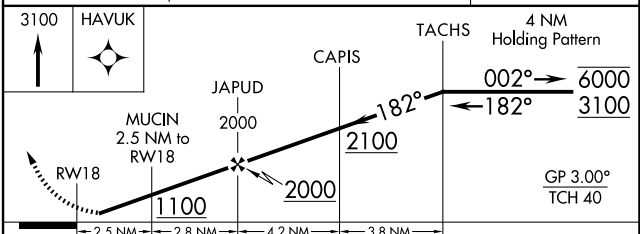
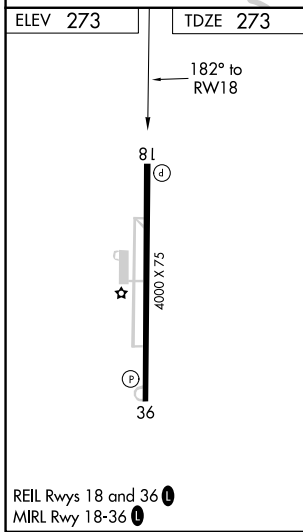
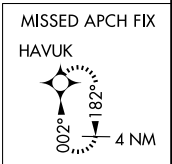
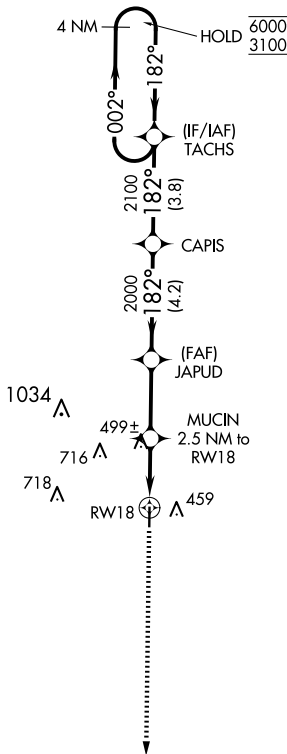
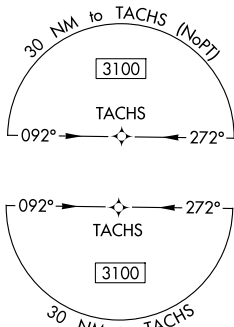


WAAS CH 45543 W18A	APP CRS 182°	Rwy Idg TDZE 273 Apt Elev 273
--	------------------------	---

RNAV (GPS) RWY 18

POCAHONTAS MUNI (M7 \emptyset)

RNP APCH. Rwy 18 helicopter visibility reduction below 3/4 SM NA. Baro-VNAV NA. Use Walnut Ridge altimeter setting.		MISSED APPROACH: Climb to 3100 direct HAVUK and hold.
ARG AWOS-3PT 126.525	MEMPHIS CENTER 120.075 289.4	UNICOM 122.8 (CTAF) \emptyset



CATEGORY	A	B	C	D
LPV DA	571-1 298 (300-1)			
LNNAV/VNAV DA	733-1 3/8 460 (500-1 3/8)			
LNNAV MDA	780-1 507 (600-1)		780-1 3/8 507 (600-1 3/8)	
CIRCLING	900-1 627 (700-1)		1100-2 1/2 827 (900-2 1/2)	1100-2 3/4 827 (900-2 3/4)

SC-1, 17 APR 2025 to 15 MAY 2025

SC-1, 17 APR 2025 to 15 MAY 2025