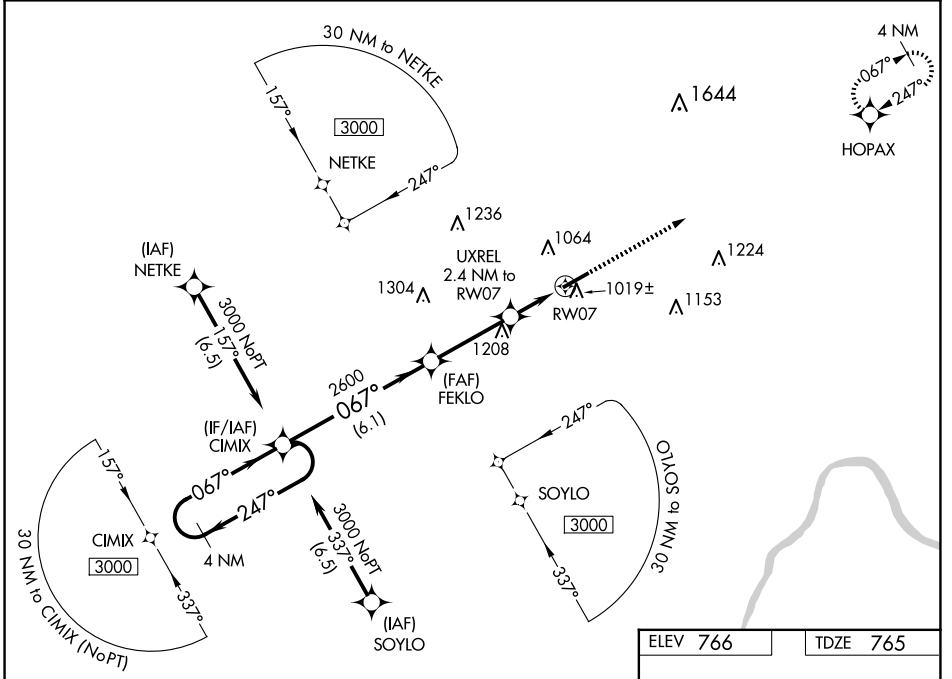


WAAS CH <b>81916</b> <b>W07A</b>	APP CRS <b>067°</b>	Rwy ldg <b>4700</b> TDZE <b>765</b> Apt Elev <b>766</b>
--	------------------------	---

# RNAV (GPS) RWY 7

OHIO UNIVERSITY (UNI)

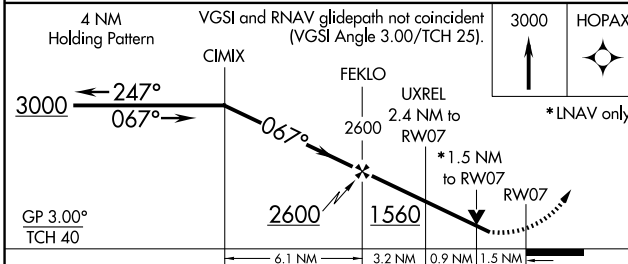
<p><b>⚠</b> For uncompensated Baro-VNAV systems, LNAV/VNAV NA below -1.6°C (4°F) or above 54°C (130°F). DME/DME RNP-0.3 NA. Rwy 7 helicopter visibility reduction below ¾ SM NA.</p>		<p>MISSED APPROACH: Climb to 3000 direct HOPAX and hold.</p>	
AWOS-3 <b>128.325</b>	HUNTINGTON APP CON <b>120.95 270.1</b>	CLNC DEL <b>120.95</b>	UNICOM <b>123.075 (CTAF) 0</b>



EC-2, 17 APR 2025 to 15 MAY 2025

EC-2, 17 APR 2025 to 15 MAY 2025

ELEV <b>766</b>	TDZE <b>765</b>
-----------------	-----------------



CATEGORY	A	B	C	D
LPV DA	1184-1½		419 (500-1½)	
LNAV/VNAV DA	1202-1½		437 (500-1½)	
LNAV MDA	1280-1	515 (600-1)	1280-1⅜	515 (600-1⅜)
<b>C</b> CIRCLING	1380-1	614 (700-1)	1420-1¾	1480-2¼
			654 (700-1¾)	714 (800-2¼)

