

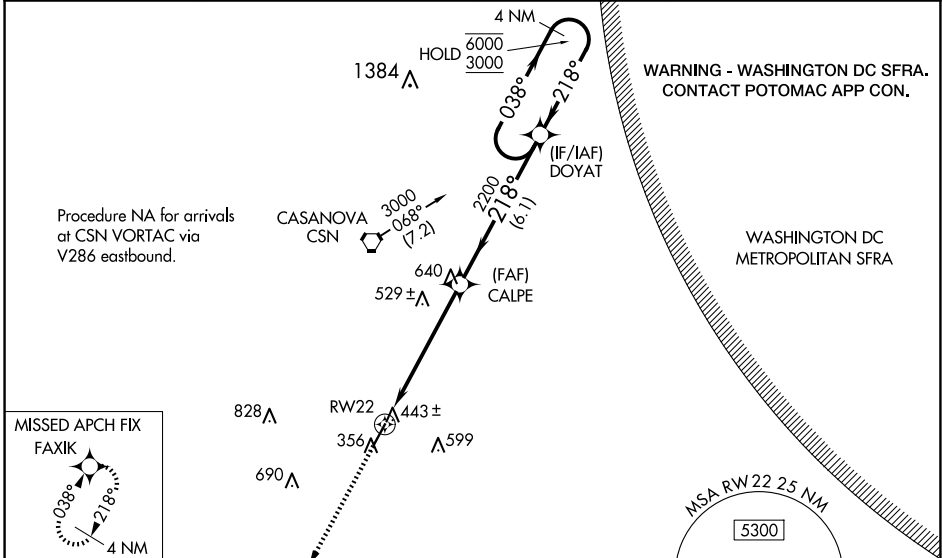
WAAS CH 56306 W22A	APP CRS 218°	Rwy Idg TDZE Apt Elev	5000 315 316
--	------------------------	-----------------------------	---

RNAV (GPS) RWY 22

CULPEPER RGNL (CJR)

RNP APCH - GPS.			MISSED APPROACH: Climb to 3000 direct FAXIK and hold.
⚠ Rwy 22 helicopter visibility reduction below 1 SM NA. Baro-VNAV NA when using IAD altimeter setting. For uncompensated Baro-VNAV systems, LNAV/VNAV NA below -15°C or above 48°C. When local altimeter setting not received, use IAD altimeter setting and increase LPV DA to 730 feet; increase LNAV/VNAV DA to 776 feet; increase all MDAs 80 feet and visibility Cats C ¼ SM and D ½ SM. Straight-in Rwy 22 at night, Circling Rwy 4, 22 at night, operational VGSI required, remain on or above VGSI glidepath until threshold.			

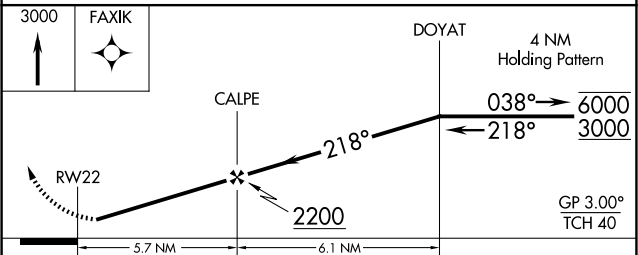
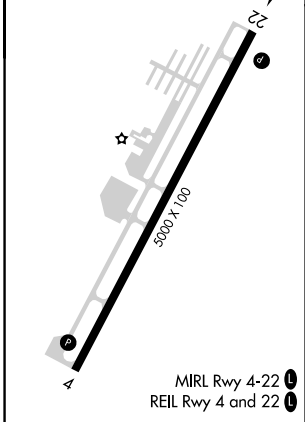
AWOS-3 119.325	POTOMAC APP CON 128.525 306.925	CLNC DEL 121.6	UNICOM 123.075 (CTAF) 📞
--------------------------	---	--------------------------	-----------------------------------



NE-3, 17 APR 2025 to 15 MAY 2025

NE-3, 17 APR 2025 to 15 MAY 2025

ELEV 316	TDZE 315
----------	----------



CATEGORY	A	B	C	D
LPV DA	657-1¼ 342 (400-1¼)			
LNAV/VNAV DA	703-1½ 388 (400-1½)			
LNAV MDA	800-1	485 (500-1)	800-1¼ 485 (500-1¼)	800-1½ 485 (500-1½)