

WAAS CH 77606 W04A	APP CRS 038°	Rwy Idg TDZE 316 Apt Elev 316	5000 316 316
--	------------------------	---	---

RNAV (GPS) RWY 4

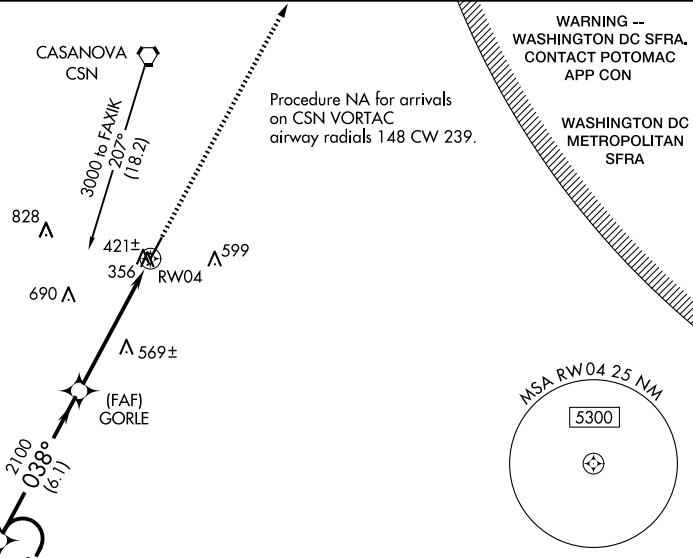
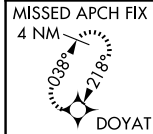
CULPEPER RGNL (CJR)

RNP APCH - GPS.

⚠ Rwy 4 helicopter visibility reduction below 1 SM NA. Baro-VNAV NA when using IAD alimeter setting. For uncompensated Baro-VNAV systems, LNAV/VNAV NA below -15°C or above 48°C. When local alimeter setting not received, use IAD alimeter setting and increase LPV DA to 683 feet; increase LNAV/VNAV DA to 906 feet; increase all MDAs 80 feet and visibility Cats C/D ¼ SM. Straight-in Rwy 4 at night, Circling Rwy 4, 22 at night, operational VGSI required, remain on or above VGSI glidepath until threshold.

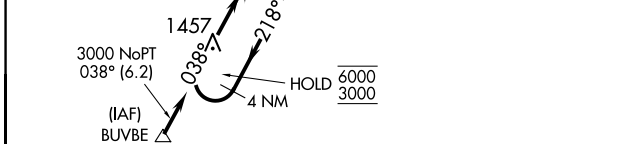
MISSED APPROACH:
Climb to 3000 direct DOYAT and hold.

AWOS-3 119.325	POTOMAC APP CON 128.525 306.925	CLNC DEL 121.6	UNICOM 123.075 (CTAF) ①
--------------------------	---	--------------------------	-----------------------------------

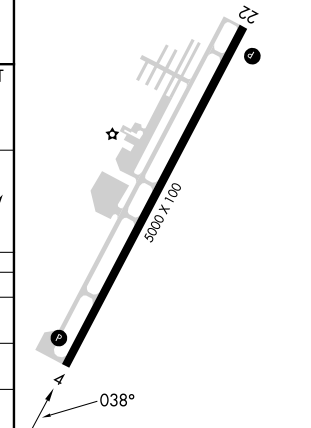
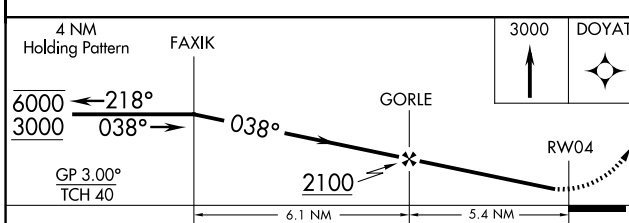


NE-3, 17 APR 2025 to 15 MAY 2025

NE-3, 17 APR 2025 to 15 MAY 2025



ELEV 316	TDZE 316
REIL Rwy 4 and 22 ①	
MIRL Rwy 4-22 ①	



CATEGORY	A	B	C	D
LPV DA	610-1 294 (300-1)			
LNAV/VNAV DA	833-1¾ 517 (600-1¾)			
LNAV MDA	820-1 504 (600-1)		820-1½ 504 (600-1½)	