

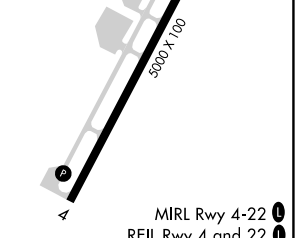
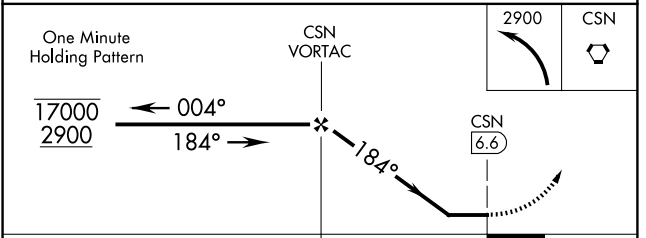
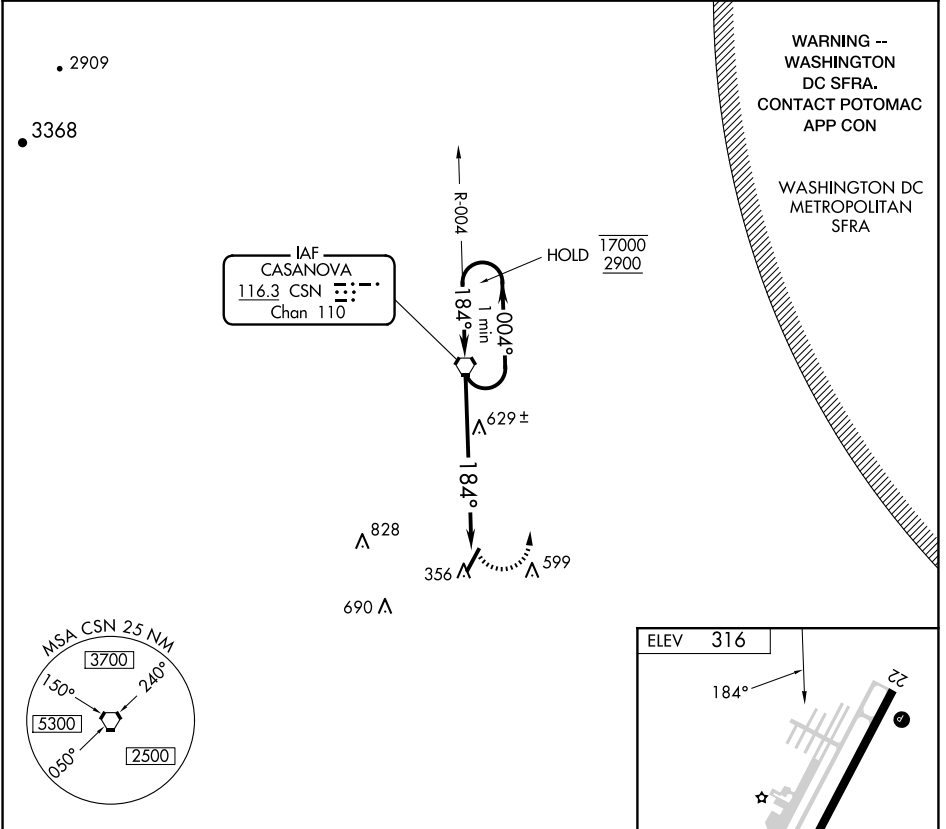
VORTAC CSN <b>116.3</b> Chan <b>110</b>	APP CRS <b>184°</b>	Rwy Idg TDZE Apt Elev	<b>N/A</b> <b>N/A</b> <b>316</b>
---	------------------------	-----------------------------	--

**VOR-A**  
CULPEPER RGNL (CJR)

**⚠** Rwy 4, 22 helicopter visibility reduction below 1 SM NA. When Circling to Rwy 4, 22 at night, operational VGSI required, remain on or above VGSI glidepath until threshold. When local altimeter setting not received, use IAD altimeter setting and increase all MDAs 80 feet, Circling Cats C and D visibility ¼ SM.

**MISSED APPROACH:** Climbing left turn to 2900 direct CSN VORTAC and hold.

AWOS-3 <b>119.325</b>	POTOMAC APP CON <b>128.525 306.925</b>	CLNC DEL <b>121.6</b>	UNICOM <b>123.075 (CTAF)</b>
--------------------------	---	--------------------------	---------------------------------



CATEGORY	A	B	C	D	FAF to MAP 6.6 NM					
CIRCLING	920-1	960-1	960-1¾	1100-2½	Knots	60	90	120	150	180
	604 (700-1)	644 (700-1)	644 (700-1¾)	784 (800-2½)	Min:Sec	6:36	4:24	3:18	2:38	2:12

NE-3, 17 APR 2025 to 15 MAY 2025

NE-3, 17 APR 2025 to 15 MAY 2025