

LOC/DME I-ASE <b>111.15</b> Chan <b>48(Y)</b>	APP CRS <b>151°</b>	Rwy Idg TDZE Apt Elev <b>N/A</b> <b>N/A</b> <b>7838</b>
---	------------------------	---

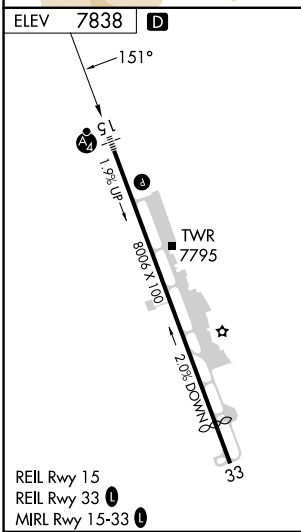
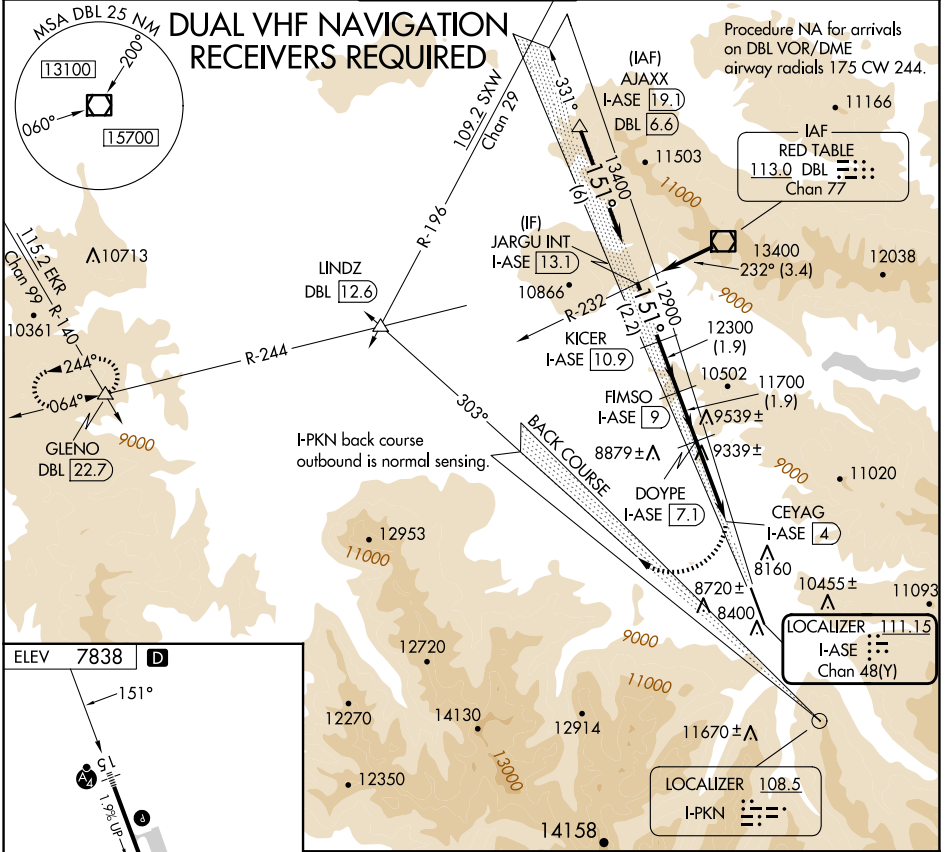
# LOC/DME-E

ASPEN-PITKIN COUNTY/SARDY FLD (ASE)

**NA** Procedure NA at night.  
Circling NA for Cat C southwest of Rwy 15-33.

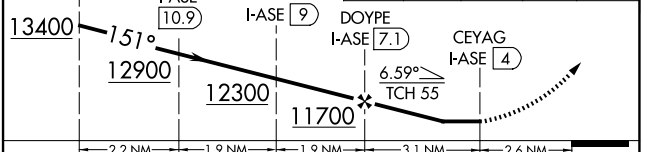
**MISSED APPROACH:** Climbing right turn to 14000 on heading 300° and on I-PKN localizer NW course (303°) to LINDZ INT/DBL 12.6 DME and on DBL VOR/DME R-244 to GLENO INT/DBL 22.7 DME and hold.

ATIS <b>120.4</b>	ASPEN APP CON * <b>123.8 288.3</b>	ASPEN TOWER * <b>118.85 (CTAF) 0 288.3</b>	GND CON <b>121.9</b>	CLNC DEL <b>123.75</b>	UNICOM <b>122.95</b>
----------------------	---------------------------------------	---	-------------------------	---------------------------	-------------------------



VGSI and descent angles not coincident (VGSI Angle 3.50/TCH 55).

JARGU INT I-ASE 13.1	KICER I-ASE 10.9	FIMSO I-ASE 9	DOYPE I-ASE 7.1	CEYAG I-ASE 4	LINDZ R-244	DBL R-244	GLENO
----------------------	------------------	---------------	-----------------	---------------	-------------	-----------	-------



CATEGORY	A	B	C	D
CIRCLING	9840-3 2002 (2100-3)	10220-3 2382 (2400-3)	10960-3 3122 (3200-3)	NA

SW-1, 17 APR 2025 to 15 MAY 2025

SW-1, 17 APR 2025 to 15 MAY 2025