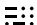
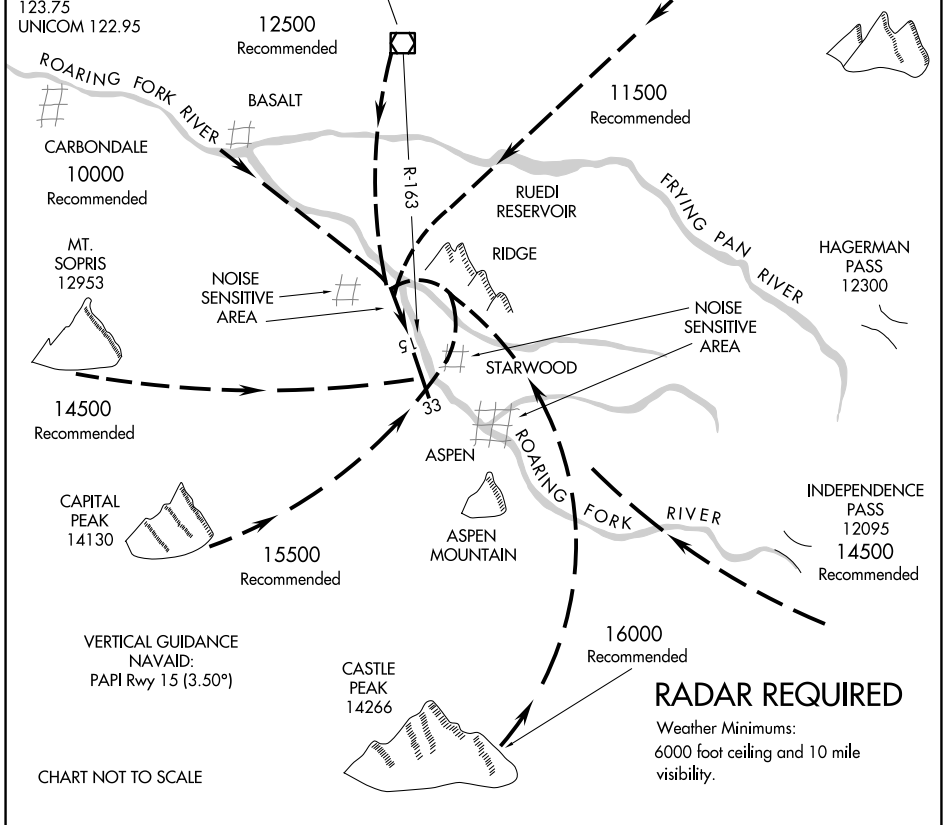


# ROARING FORK VISUAL RWY 15

ASPEN-PITKIN COUNTY/SARDY FLD (A5E)  
ASPEN, COLORADO

ATIS 120.4  
 ASPEN APP CON \*  
 123.8 288.3  
 ASPEN TOWER \*  
 118.85 (CTAF) 288.3  
 GND CON  
 121.9  
 CLNC DEL  
 123.75  
 UNICOM 122.95

**RED TABLE**  
 113.0 DBL   
 Chan 77



## ROARING FORK VISUAL RWY 15

Procedure not authorized at night.  
 When visual approaches to Runway 15 are in progress, clearances will be given utilizing in part the following phraseology:  
 "(IDENT) cleared for a ROARING FORK VISUAL Approach to Runway 15."

# ROARING FORK VISUAL RWY 15

Orig 16NOV89

39°13'N-106°52'W

ASPEN, COLORADO  
ASPEN-PITKIN COUNTY/SARDY FLD (A5E)