

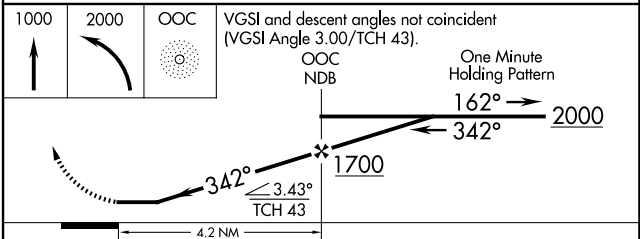
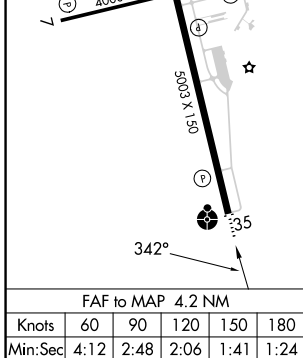
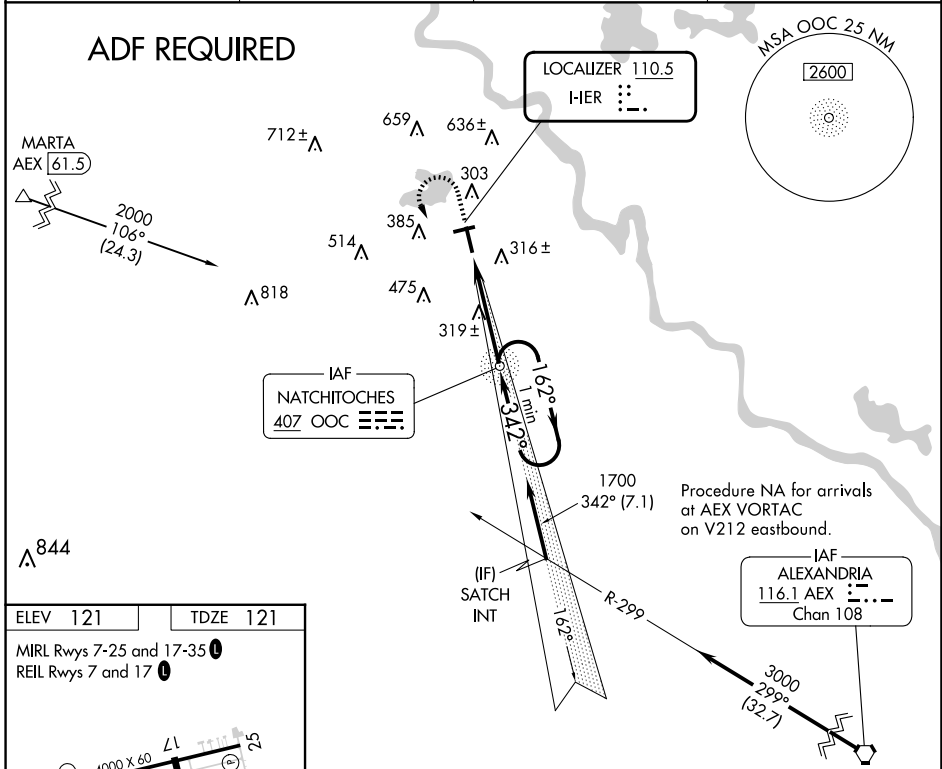
LOC I-HER <b>110.5</b>	APP CRS <b>342°</b>	Rwy Idg <b>5003</b>
		TDZE <b>121</b>
		Apt Elev <b>121</b>

**LOC RWY 35**  
NATCHITOCHE RGNL (I.E.R.)

**NA** Helicopter visibility reduction below 3/4 SM NA. When local altimeter setting not received, use Alexandria Intl altimeter setting: increase all MDA 100 feet and S-35 Cat C visibility 1/4 SM and Circling Cat C visibility 1/2 SM. For inop ODALS when using Alexandria Intl altimeter setting, increase S-35 Cat C visibility 1/8 mile. Inop table does not apply to S-35 Cat A/B. ADF required.

**ODALS** MISSED APPROACH: Climb to 1000 then climbing left turn to 2000 direct OOC NDB and hold.

AWOS-3 <b>119.025</b>	POLK APP CON <b>125.4 302.2</b>	GCO <b>135.075</b>	UNICOM <b>122.8(CTAF) 0</b>
--------------------------	------------------------------------	-----------------------	--------------------------------



CATEGORY	A	B	C	D
S-35	580-1	459 (500-1)	580-1 1/8 459 (500-1 1/8)	NA
CIRCLING	680-1 559 (600-1)	740-1 619 (700-1)	860-2 739 (800-2)	NA

SC-4, 17 APR 2025 to 15 MAY 2025

SC-4, 17 APR 2025 to 15 MAY 2025