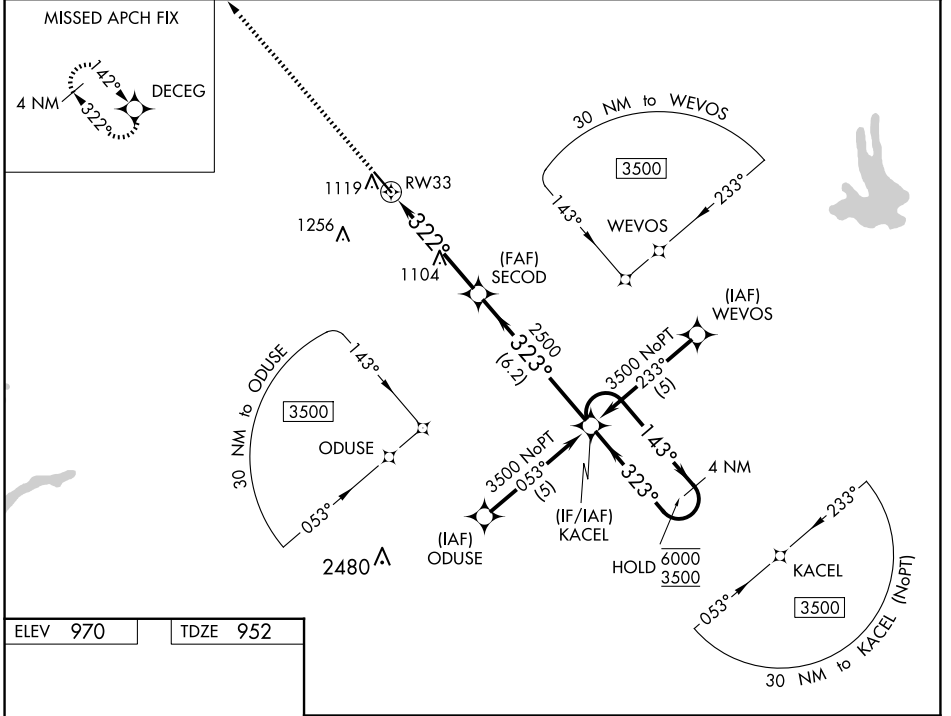


WAAS CH 77528 W33A	APP CRS 322°	Rwy Idg TDZE 5500 952 Apt Elev 970
--	------------------------	--

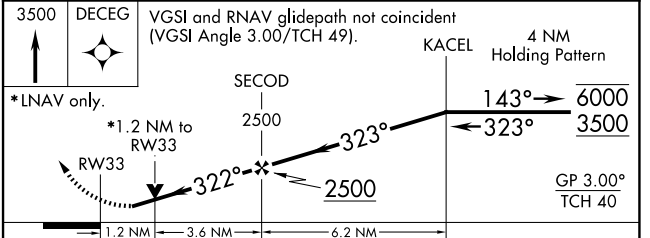
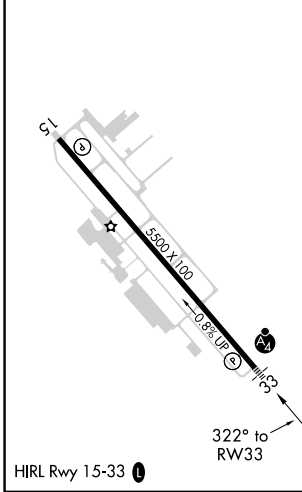
RNAV (GPS) RWY 33

NEWNAN COWETA COUNTY (CCO)

RNP APCH.		MALSF	MISSED APPROACH: Climb to 3500 direct DECEG and hold.
AWOS-3PT 118.975	ATLANTA APP CON 119.8 354.125	GCO 121.725	UNICOM 122.7 (CTAF) 0



ELEV 970	TDZE 952
----------	----------



CATEGORY	A	B	C	D
LPV DA		1242-1	290 (300-1)	
LNAV/VNAV DA		1286-1	334 (400-1)	
LNAV MDA		1360-1	408 (400-1)	
<input checked="" type="checkbox"/> CIRCLING	1420-1	450 (500-1)	1560-1½ 590 (600-1½)	1560-2 590 (600-2)

SE-4, 17 APR 2025 to 15 MAY 2025

SE-4, 17 APR 2025 to 15 MAY 2025