

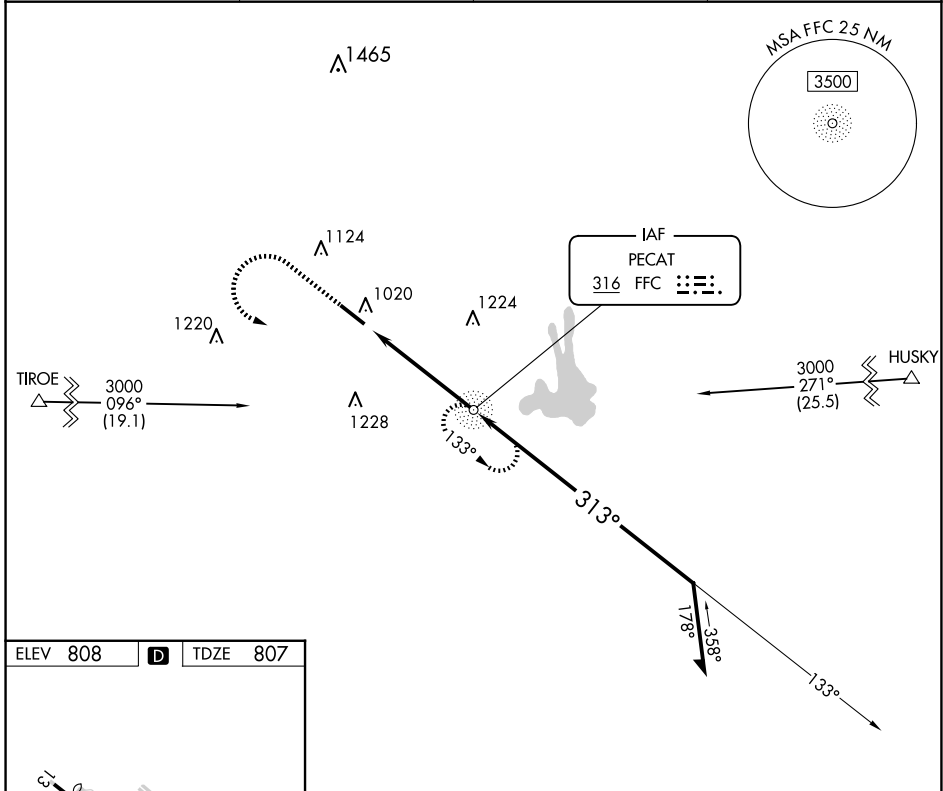
NDB FFC <b>316</b>	APP CRS <b>313°</b>	Rwy Idg TDZE Apt Elev	<b>5118</b> <b>807</b> <b>808</b>
-----------------------	------------------------	-----------------------------	---

# NDB RWY 31

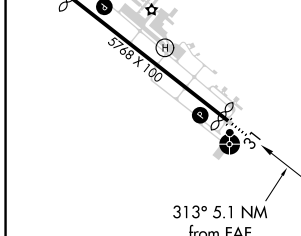
ATLANTA RGNL FALCON FLD (F'F'C)

	Circling Rwy 13 NA at night. Rwy 31 helicopter visibility reduction below 3/4 SM NA. For Inop ALS, increase Cat C/D visibility to 1 1/2 SM.	ODALS 	MISSED APPROACH: Climb to 1700 then climbing left turn to 2500 direct FFC NDB and hold.
		NA	MISSED APPROACH: Climb to 1700 then climbing left turn to 2500 direct FFC NDB and hold.

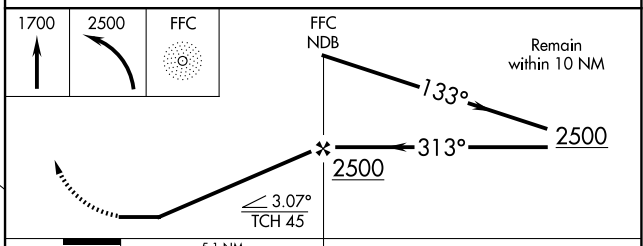
ASOS <b>118.525</b>	ATLANTA APP CON <b>119.8 354.125</b>	CLNC DEL <b>119.8</b>	UNICOM <b>123.05 (CTAF)</b>
------------------------	---	--------------------------	--------------------------------



ELEV 808	<b>D</b>	TDZE 807
----------	----------	----------



REIL Rwy 13	MIRL Rwy 13-31				
FAF to MAP 5.1 NM					
Knots	60	90	120	150	180
Min:Sec	5:06	3:24	2:33	2:02	1:42



CATEGORY	A	B	C	D
S-31	1360-3/4	553 (600-3/4)	1360-1 3/8	553 (600-1 3/8)
<b>CIRCLING</b>	1360-1	552 (600-1)	1440-1 3/4	1540-2 1/4
			632 (700-1 3/4)	732 (800-2 1/4)

SE-4, 17 APR 2025 to 15 MAY 2025

SE-4, 17 APR 2025 to 15 MAY 2025