

BNICE TWO DEPARTURE (RNAV)

RNAV 1 - DME/DME/IRU or GPS.

RADAR required for non-GPS equipped aircraft.

**TOP ALTITUDE:
ASSIGNED BY ATC**

MIAMI DEP CON

126.05 251.1

ATIS

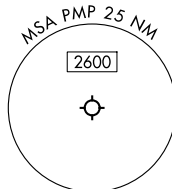
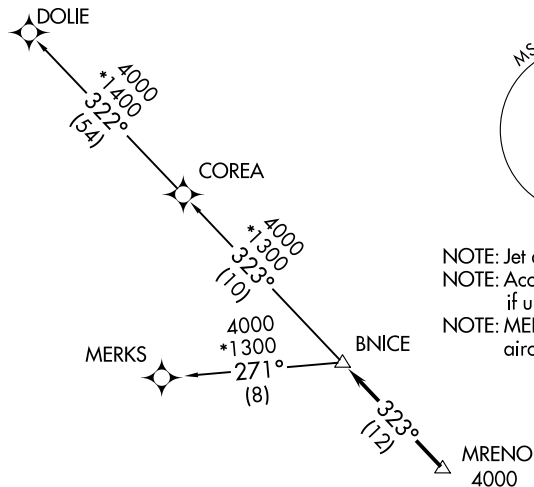
120.55

GND CON

121.9

POMPANO BEACH TOWER ★

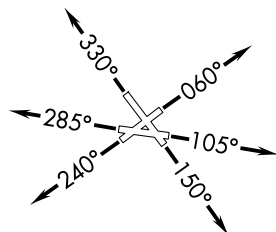
125.4 (CTAF)



NOTE: Jet aircraft only.

NOTE: Accelerate to 250K until leaving 10000,
if unable, advise ATC.

NOTE: MERKS Transition ATC assigned only except aircraft landing: MKY, RSW, APF, PGD, FMY.



TAKEOFF MINIMUMS

Rwys 6, 10, 15, 24, 28, 33: Standard with minimum climb of 500' /NM to 520.

NOTE: Chart not to scale.



DEPARTURE ROUTE DESCRIPTION

TAKEOFF RUNWAY 6: Climb on heading 060° or as assigned by ATC, thence. . .

TAKEOFF RUNWAY 10: Climb on heading 105° or as assigned by ATC, thence. . .

TAKEOFF RUNWAY 15: Climb on heading 150° or as assigned by ATC, thence. . .

TAKEOFF RUNWAY 24: Climb on heading 240° or as assigned by ATC, thence. .

TAKEOFF RUNWAY 28: Climb on heading 285° or as assigned by ATC, thence. . .

TAKEOFF RUNWAY 33: Climb on heading 330° or as assigned by ATC, thence. . .

... for RADAR vectors to cross MRENO at or above 4000, then on track 323° to BNICE, then on assigned transition, maintain ATC assigned altitude, expect clearance to filed altitude within 10 minutes after departure.

COREA TRANSITION (BNICE2.COREA)

DOLIE TRANSITION (BNICE2.DOLIE)

MERKS TRANSITION (BNICE2.MERKS)

BNICE TWO DEPARTURE (RNAV)

(BNICE2.BNICE) 21MAR24

POMPANO BEACH, FLORIDA

POMPANO BEACH AIRPARK (PMP)

SE-3, 17 APR 2025 to 15 MAY 2025

SE-3, 17 APR 2025 to 15 MAY 2025