

|  |                        |   |   |
|--|------------------------|---|---|
| VOR/DME BSV<br><b>114.05</b><br>Chan <b>87</b> (Y) | APP CRS<br><b>127°</b> | Rwy Idg<br>TDZE<br>Apt Elev <b>1164</b> | <b>N/A</b><br><b>N/A</b><br><b>1164</b> |
|--|------------------------|---|---|

# VOR-A

CARROLL COUNTY-TOLSON (T50)

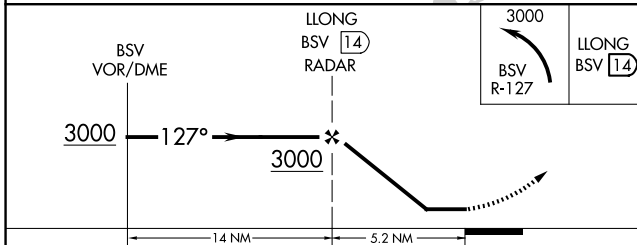
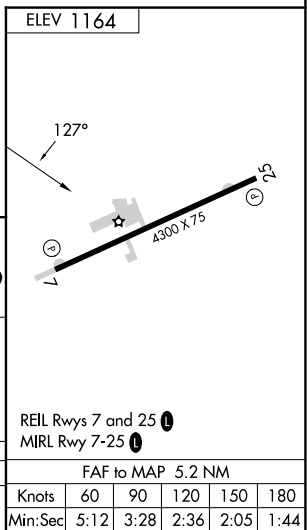
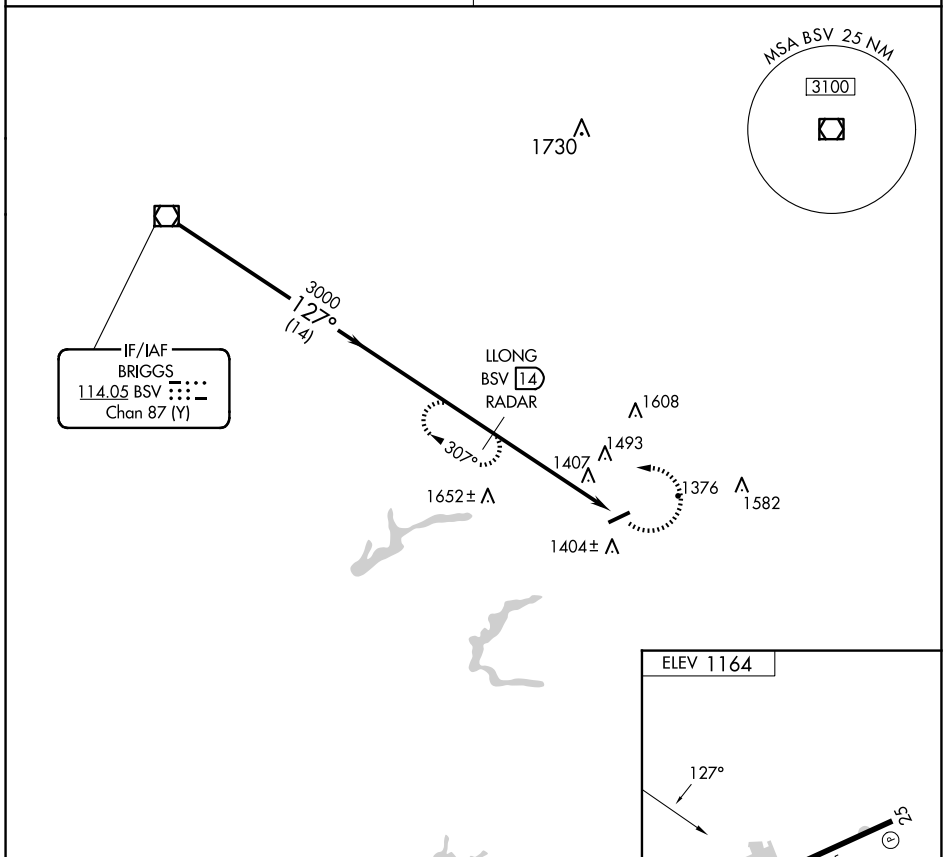
DME or RADAR required.

Procedure NA at night. Use Akron-Canton altimeter setting; when not received, use New Philadelphia altimeter setting and increase MDA 20 feet.

MISSED APPROACH: Climbing left turn to 3000 on BSV VOR/DME R-127 to LLONG/BSV 14 DME/RADAR and hold.

CLEVELAND APP CON ★  
**125.5 371.875**

UNICOM  
**122.7** (CTAF) **1**



|          |        |             |    |   |                   |      |      |      |      |      |
|----------|--------|-------------|----|---|-------------------|------|------|------|------|------|
| CATEGORY | A      | B           | C  | D | FAF to MAP 5.2 NM |      |      |      |      |      |
| CIRCLING | 1940-1 | 777 (800-1) | NA |   | Knots             | 60   | 90   | 120  | 150  | 180  |
|          |        |             |    |   | Min:Sec           | 5:12 | 3:28 | 2:36 | 2:05 | 1:44 |

# VOR-A

EC-2, 17 APR 2025 to 15 MAY 2025

EC-2, 17 APR 2025 to 15 MAY 2025