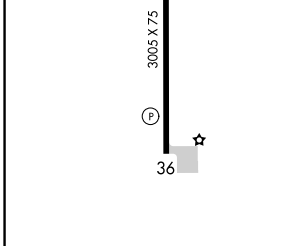
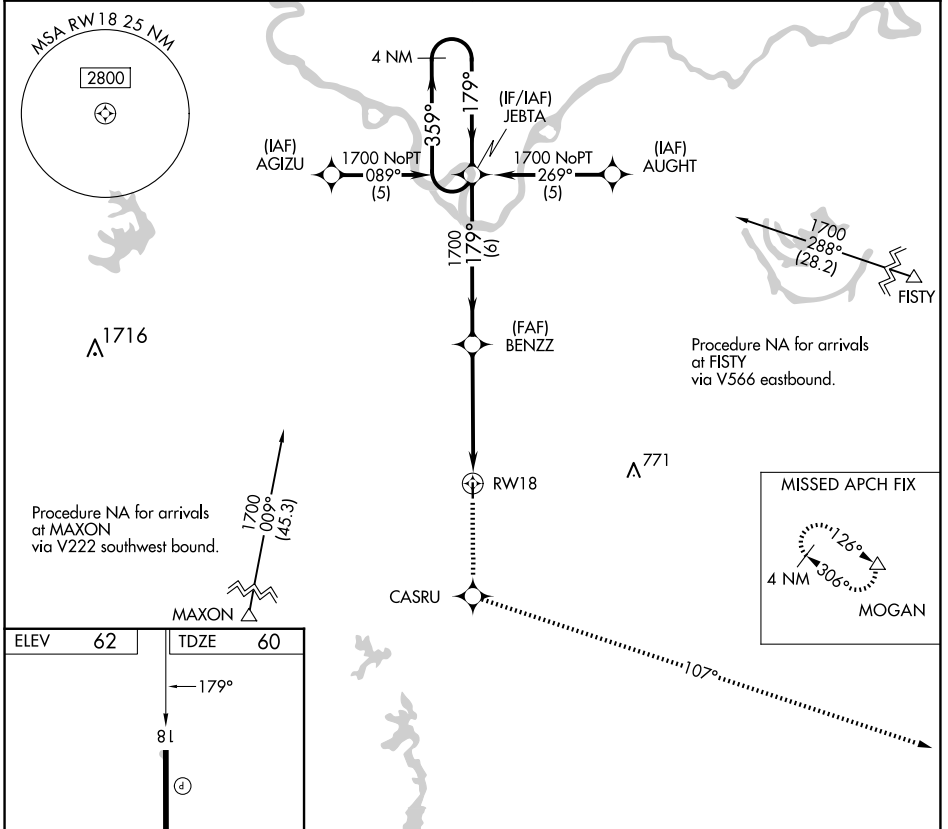


| | | |
|-------------|----------|-------------|
| APP CRS | Rwy Idg | 3005 |
| 179° | TDZE | 60 |
| | Apt Elev | 62 |

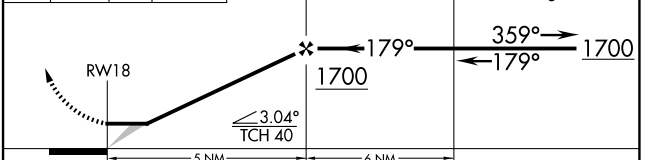
RNAV (GPS) RWY 18

BUNKIE MUNI (2R6)

| | |
|--|---|
| RNP APCH. | MISSED APPROACH: Climb to 2000 direct CASRU and via 107° track to MOGAN and hold. |
| <p>Use Alexandria Intl altimeter setting; when not received, use Esler Rgnl altimeter setting.</p> | |
| POLK APP CON 125.4 302.2 | CTAF 122.9 |



| | | | | |
|------|-------|---------|-------|--|
| 2000 | CASRU | 107° tr | MOGAN | VGSI and descent angles not coincident (VGSI Angle 3.00/TCH 25). |
| | | | | BENZZ |



| | | | | |
|----------|-------|-------------|---|----|
| CATEGORY | A | B | C | D |
| LNAV MDA | 600-1 | 540 (600-1) | | NA |

REIL Rwy 18 and 36
MIRL Rwy 18-36

SC-4, 17 APR 2025 to 15 MAY 2025

SC-4, 17 APR 2025 to 15 MAY 2025