

VORTAC AEX 116.1 Chan 108	APP CRS 140°	Rwy Idg TDZE Apt Elev N/A N/A 62
--	-------------------------------	--

VOR/DME-A

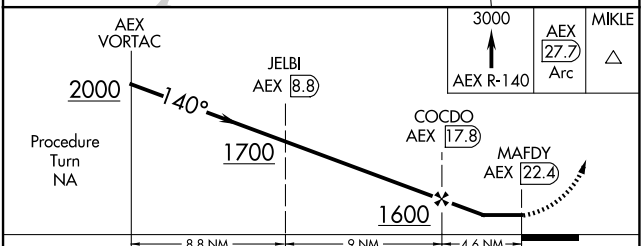
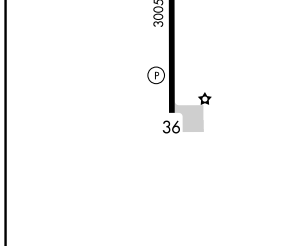
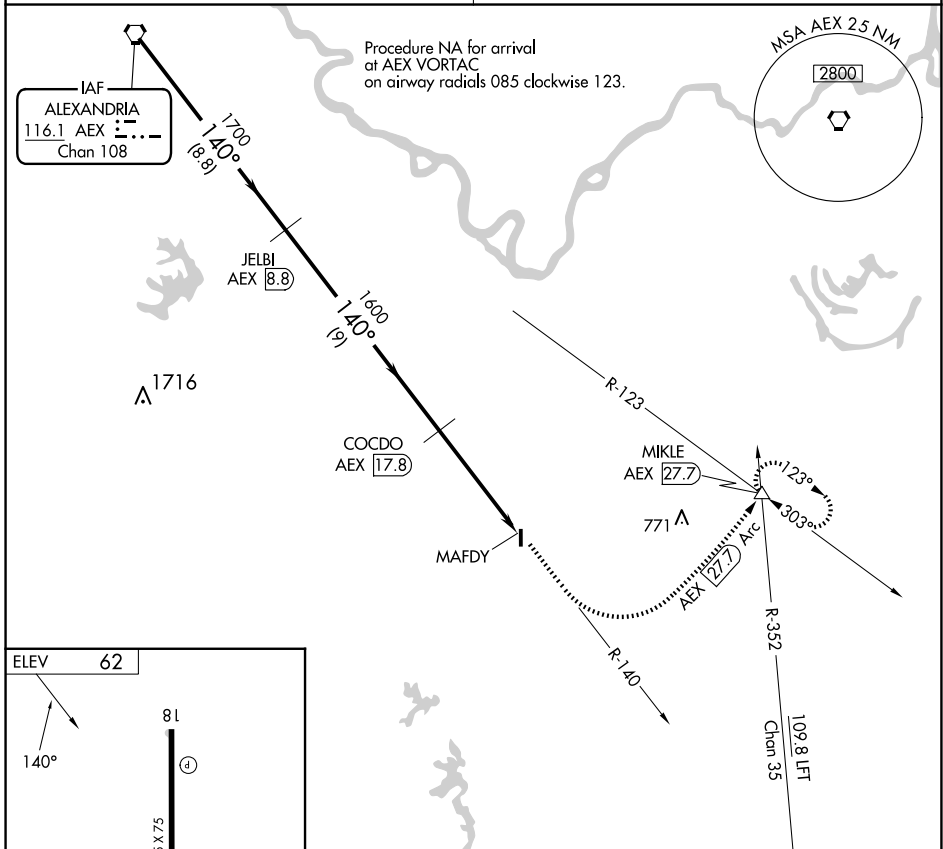
BUNKIE MUNI (2R6)

NA Use Alexandria Intl altimeter setting; when not received, use Esler Rgnl altimeter setting.

MISSED APPROACH: Climb to 3000 via AEX R-140 and AEX 27.7 DME Arc to MIKLE Int/AEX 27.7 DME and hold.

POLK APP CON
125.4 302.2

CTAF
122.9



REIL Rwys 18 and 36	MIRL Rwy 18-36			
3005 x 75	36			
81	36			
2000	1700	1600	3000	
Procedure Turn NA	JELBI AEX (8.8)	COCDO AEX (17.8)	MAFDY AEX (22.4)	
8.8 NM	9 NM	4.6 NM	3000 AEX R-140 AEX (27.7) Arc MIKLE AEX (27.7) Arc	
CATEGORY	A	B	C	D
CIRCLING	880-1 818 (900-1)	880-1¼ 818 (900-1¼)	NA	

SC-4, 17 APR 2025 to 15 MAY 2025

SC-4, 17 APR 2025 to 15 MAY 2025