

(JEWLZ1 .JEWLZ) 23054

# JEWLZ ONE DEPARTURE (RNAV)

AL-6022 (FAA-O)

STELLAR AIRPARK (P19)

CHANDLER, ARIZONA

**TOP ALTITUDE:  
AS ASSIGNED BY ATC**

RNAV 1-GPS.

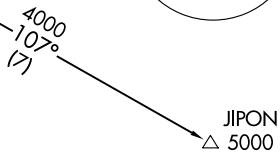
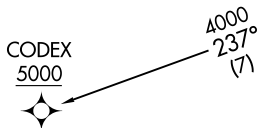
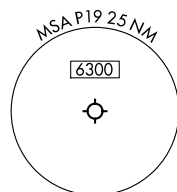
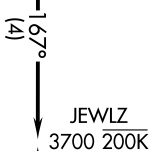
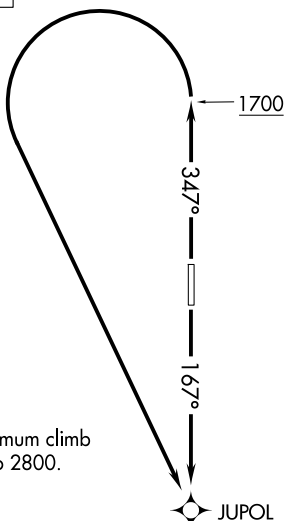
RADAR required.

PHOENIX DEP CON  
123.7 363.0

### TAKEOFF MINIMUMS

Rwy 17: Standard.

Rwy 35: Standard with minimum climb  
of 300' per NM to 2800.



NOTE: Chart not to scale.

### DEPARTURE ROUTE DESCRIPTION

TAKEOFF RUNWAY 17: Climb on course 167° to JUPOL, thence. . . .

TAKEOFF RUNWAY 35: Climb on heading 347° to 1700, then left turn direct JUPOL, thence. . . .

. . . .on track 167° to cross JEWLZ at or above 3700. Do not exceed 200K until passing JEWLZ. Maintain ATC-assigned altitude. Expect filed altitude 10 minutes after departure.

CODEX TRANSITION (JEWLZ1 .CODEX)

JIPON TRANSITION (JEWLZ1 .JIPON)

# JEWLZ ONE DEPARTURE (RNAV)

(JEWLZ1 .JEWLZ) 23FEB23

CHANDLER, ARIZONA  
STELLAR AIRPARK (P19)

SW-4, 17 APR 2025 to 15 MAY 2025

SW-4, 17 APR 2025 to 15 MAY 2025