

WAAS CH <b>83489</b> <b>W35A</b>	APP CRS <b>347°</b>	Rwy Idg <b>4068</b> TDZE <b>1178</b> Apt Elev <b>1179</b>
--	------------------------	---

# RNAV (GPS) RWY 35

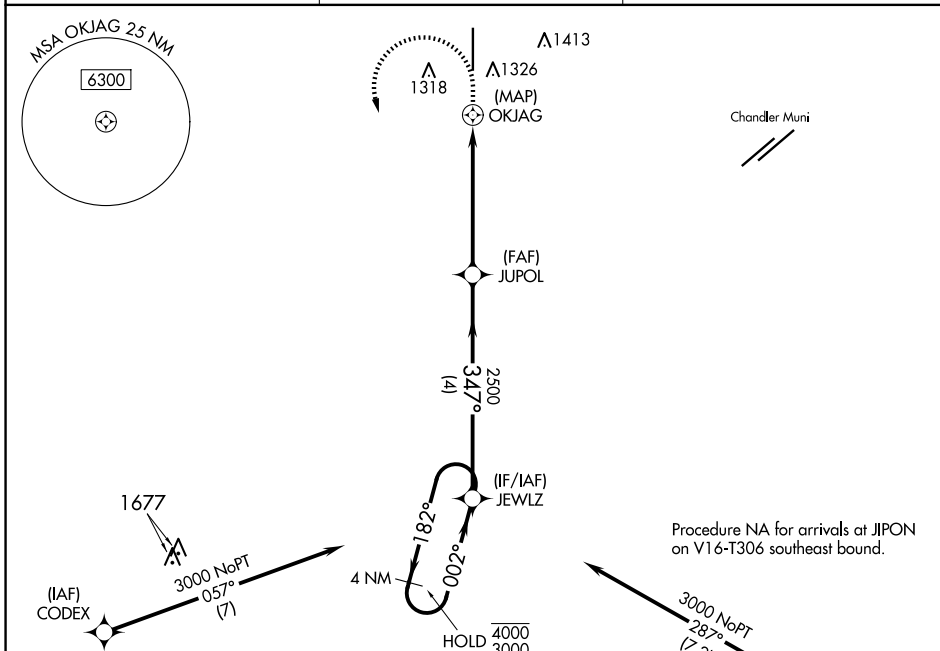
STELLAR AIRPARK (P19)

RNP APCH - GPS.

**NA** Use Phoenix Sky Harbor Intl altimeter setting. Rwy 35 helicopter visibility reduction below 1 SM NA. Activate MRL Rwy 17-35 and PAPI Rwy 17-35 - CTAF. RADAR required.

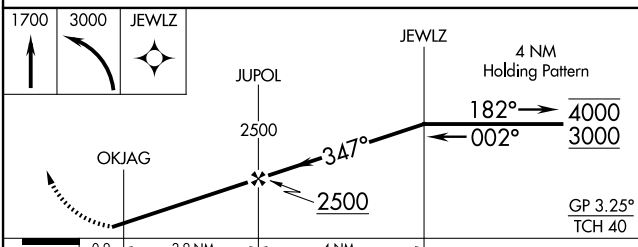
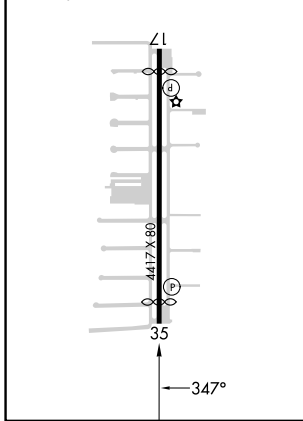
MISSED APPROACH: (Do not exceed 200K until JEWLZ) Climb to 1700 then climbing left turn to 3000 direct JEWLZ and hold.

PHX ASOS <b>127.575</b>	PHOENIX APP CON <b>123.7 363.0</b>	UNICOM <b>122.975 (CTAF) 0</b>
----------------------------	---------------------------------------	-----------------------------------



ELEV 1179	<b>D</b>	TDZE 1178
-----------	----------	-----------

MRL Rwy 17-35 **0**  
REIL Rwy 17 and 35 **0**



	0.9	2.9 NM	4 NM	
CATEGORY	A	B	C	D
LPV DA	1457-1 279 (300-1)			NA
LNAV MDA	1620-1	442 (500-1)	1620-1 3/8 442 (500-1 3/8)	NA
CIRCLING	1760-1	581 (600-1)	1760-1 1/2 581 (600-1 1/2)	NA

SW-4, 17 APR 2025 to 15 MAY 2025

SW-4, 17 APR 2025 to 15 MAY 2025