

# MMALT SEVEN DEPARTURE (RNAV)

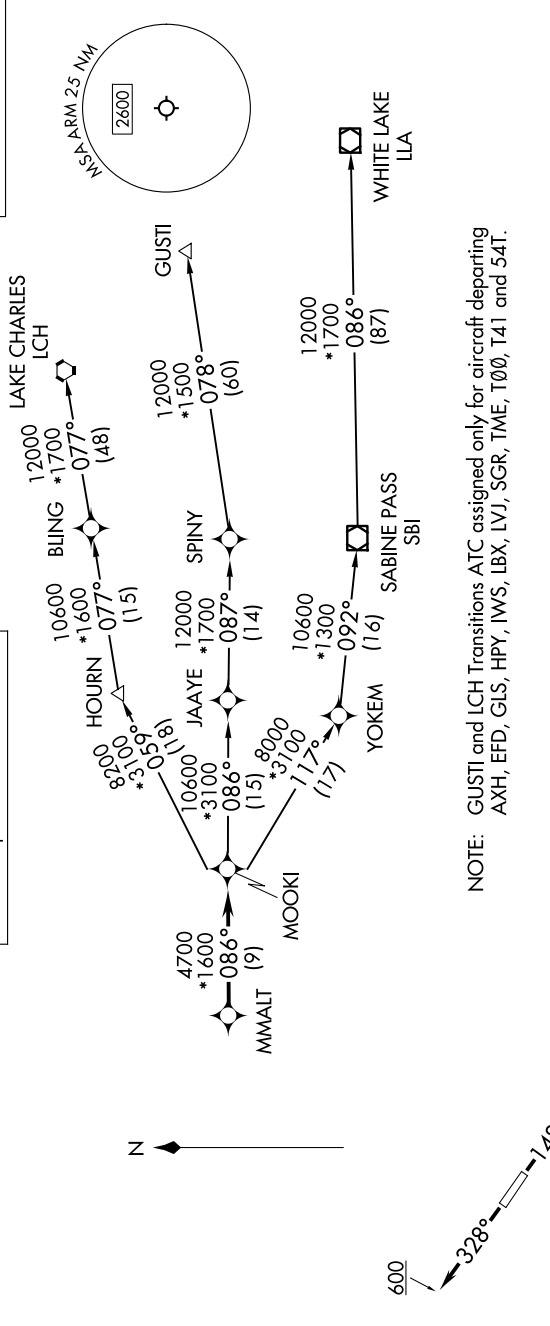
WHARTON, TEXAS

SC-5, 17 APR 2025 to 15 MAY 2025

HOUSTON DEP CON  
128.6 360.85

RNAV 1 - DME/DME/IRU or GPS.  
RADAR required.

TOP ALTITUDE:  
ASSIGNED BY ATC



NOTE: GUSTI and LCH Transitions ATC assigned only for aircraft departing AXH, EFD, GLS, HPY, IWS, LBX, LVJ, SGR, TME, T00, T41 and 54T.

## DEPARTURE ROUTE DESCRIPTION

TAKEOFF RUNWAY 14: Climb on heading 148° to 600, for RADAR vectors to MMALT, thence. . . .  
 TAKEOFF RUNWAY 32: Climb on heading 328° to 600, for RADAR vectors to MMALT, thence. . . .  
 . . . on track 086° to MOOKI, then on (transition). Maintain ATC assigned altitude.  
 Expect filed altitude 10 minutes after departure.

GUSTI TRANSITION (MMALT7.GUSTI)  
 LAKE CHARLES TRANSITION (MMALT7.LCH)  
 WHITE LAKE TRANSITION (MMALT7.LLA)

TAKEOFF MINIMUMS  
 Rwy 14, 32: Standard with minimum  
 climb of 500'/NM to 600.

NOTE: Chart not to scale.

SC-5, 17 APR 2025 to 15 MAY 2025