


WAAS CH 45818 W18A	APP CRS 180°	Rwy ldg TDZE Apt Elev	5001 44 46
--	------------------------	-----------------------------	---------------------------------------

RNAV (GPS) RWY 18

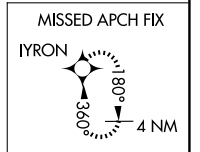
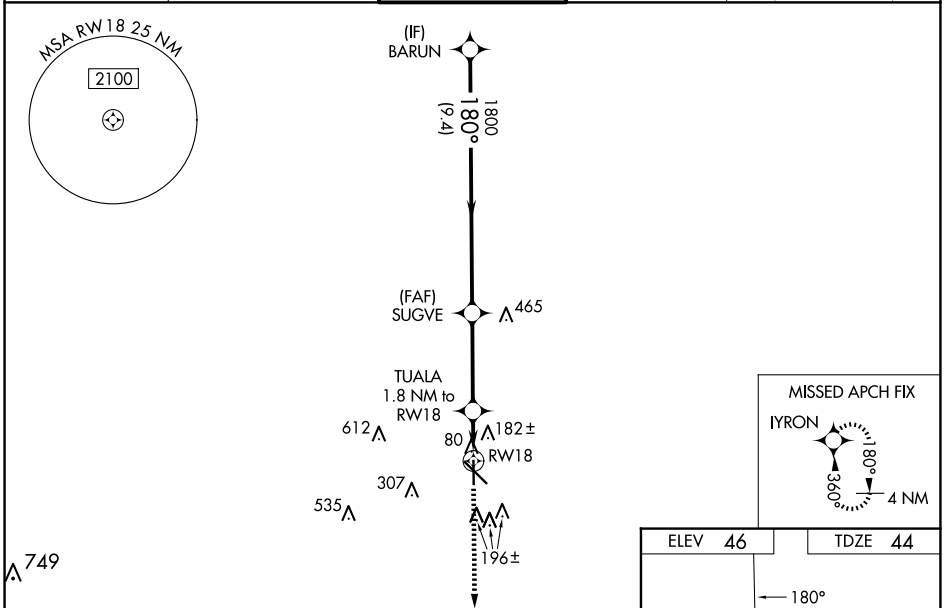
HAMMOND NORTHSHORE RGNL (HDC)

RNP APCH - GPS.

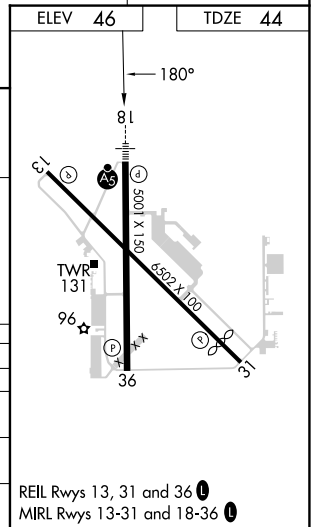
▼ Baro-VNAV and VDP NA when using Louis Armstrong New Orleans Intl altimeter setting. For uncompensated Baro-VNAV systems, LNAV/VNAV NA below -15°C or above 54°C. ▲ When local altimeter setting not received, use Louis Armstrong New Orleans Intl altimeter setting and increase LPV DA to 339 feet; increase LNAV/VNAV DA to 555 feet and all visibilities ¼ SM. Increase all MDAs 100 feet and LNAV visibility Cat C/D ½ SM, and Circling visibility Cat C/D ½ SM. For inop ALS when using Louis Armstrong New Orleans Intl altimeter increase LPV all Cats visibility to ¾ SM; LNAV/VNAV all Cats visibility to 1¾ SM and LNAV Cats C/D visibility to 1¾ SM. For inop ALS increase LNAV/VNAV all Cats visibility to 1¼ SM and LNAV Cat C/D visibility to 1¼ SM.

MALSRS
 MISSED APPROACH: Climb to 2200 direct IYRON and hold.

ATIS 118.325	NEW ORLEANS APP CON 119.3 350.35	HAMMOND TOWER ★ 120.575 (CTAF) 	GND CON 119.85	CLNC DEL 119.3 (When twr closed)
------------------------	--	--	--------------------------	---



	BARUN		SUGVE		TUALA 1.8 NM to RW18		RW18	
	1800		1800		1.1 NM to RW18		1.1 NM	
GP 3.00° TCH 52	180°		180°		660		RW18	
	9.4 NM		3.5 NM		0.7 NM		1.1 NM	
CATEGORY	A		B		C		D	
LPV DA	250-½		206 (300-½)					
LNAV/VNAV DA	466-¾		422 (500-¾)					
LNAV MDA	460-½		416 (500-½)		460-¾		416 (500-¾)	
CIRCLING	500-1		454 (500-1)		620-1½ 574 (600-1½)		920-2¾ 874 (900-2¾)	



SC-4, 17 APR 2025 to 15 MAY 2025

SC-4, 17 APR 2025 to 15 MAY 2025