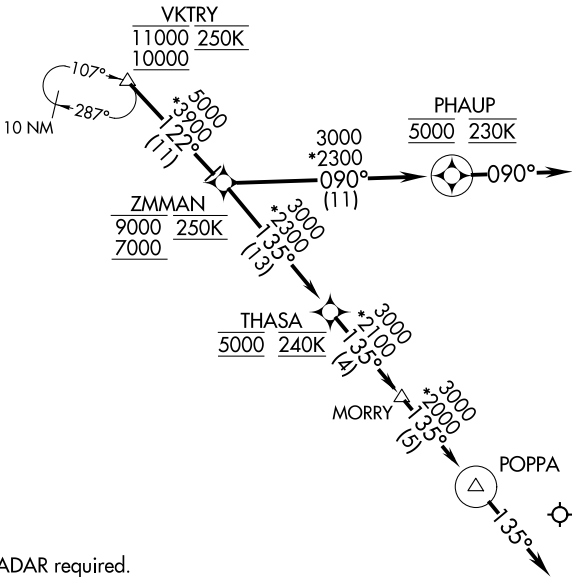


LONE STAR APP CON
119.875 284.65
D-ATIS ARR
123.775



- NOTE: RADAR required.
NOTE: RNAV 1.
NOTE: DME/DME/IRU or GPS required.
NOTE: Turbojet aircraft only.
NOTE: Aircraft should expect ILS or LOC RWY 18R.
NOTE: For use when DFW is operating in a south flow.
When DFW is operating in a north flow, file and expect the JOVEM RNAV STAR.

NOTE: Chart not to scale.

ARRIVAL ROUTE DESCRIPTION

From VKTRY on track 122° to cross ZMMAN between 7000 and 9000 and at 250K.

LANDING RUNWAY 13R: From ZMMAN on track 135° to cross THASA at 5000 and at 240K, then on track 135° to MORRY, then on track 135° to POPPA, then on track 135°.
Expect RADAR vectors to final approach course.

LANDING RUNWAYS 17L/C/R, 18L/R: From ZMMAN on track 090° to cross PHAUP at 5000 and at 230K, then on track 090°.
Expect RADAR vectors to final approach course.