

APP CRS	Rwy Idg	4802
081°	TDZE	912
	Apt Elev	912

RNAV (GPS) RWY 8

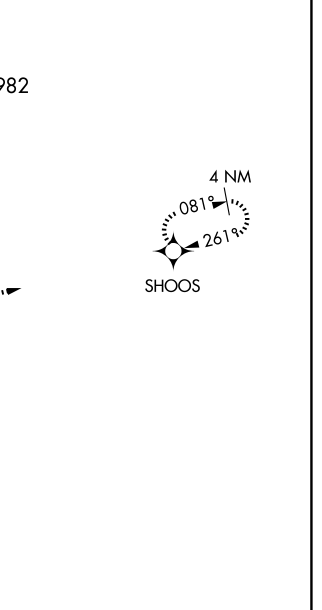
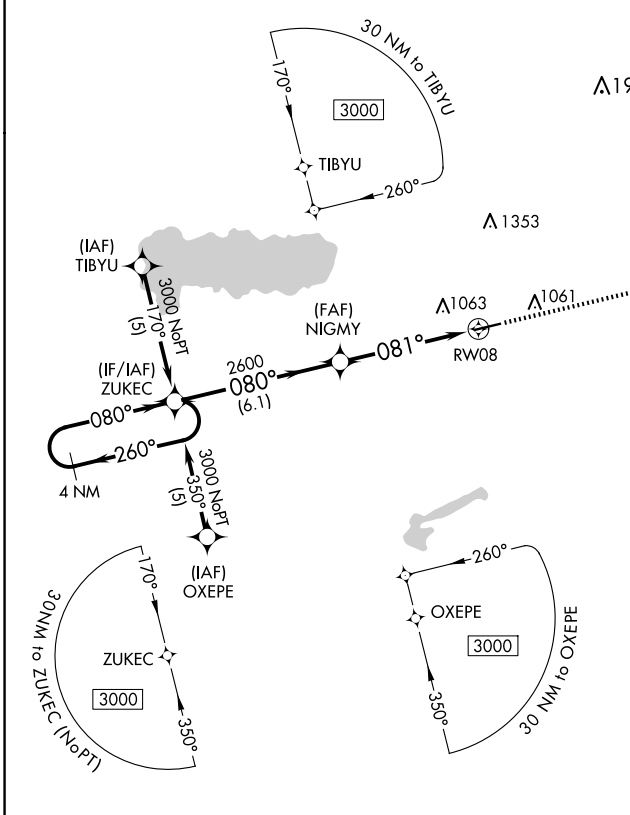
NEIL ARMSTRONG (AXV)

RNP APCH - GPS.

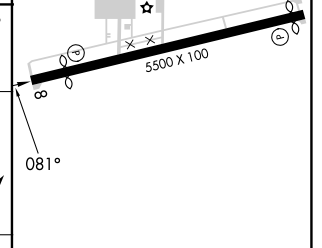
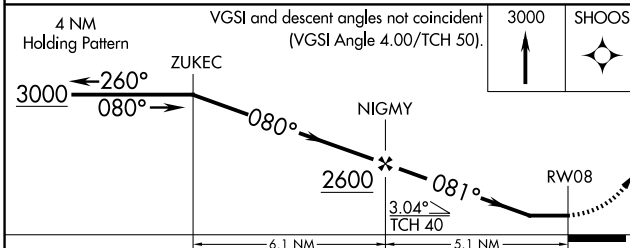
NA Rwy 8 helicopter visibility reduction below 1 SM NA. When local altimeter setting not received, use Lima altimeter setting and increase all MDAs 60 feet and visibility Cat C 1/8 SM. Procedure NA at night.

MISSED APPROACH: Climb to 3000 direct SHOOS and hold.

AWOS-3PT 128.325	COLUMBUS APP CON 134.45 294.5	UNICOM 122.8 (CTAF)	122.7
----------------------------	---	-------------------------------	--------------



ELEV	912	TDZE	912
------	------------	------	------------



CATEGORY	A	B	C	D
LNNAV MDA	1380-1	468 (500-1)	1380-1 1/4 468 (500-1 1/4)	NA

MIRL Rwy 8-26
REIL Rws 8 and 26

EC-2, 17 APR 2025 to 15 MAY 2025

EC-2, 17 APR 2025 to 15 MAY 2025