

WAAS CH 87028 W35A	APP CRS 350°	Rwy Idg TDZE Apt Elev	6008 308 312
--	------------------------	-----------------------------	---

RNAV (GPS) RWY 35

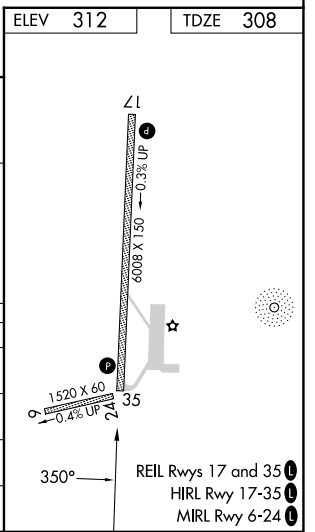
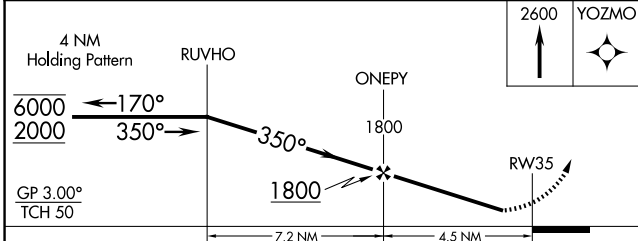
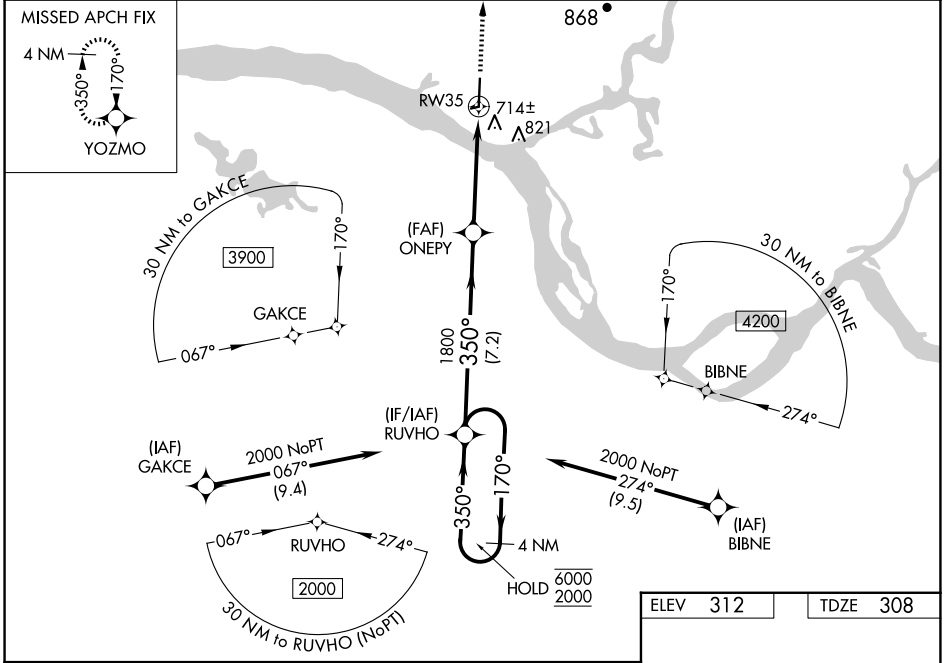
ST MARY'S (KSM)(PASM)

RNP APCH - GPS.

⚠ Circling NA east of Rwy 17-35. Rwy 35 helicopter visibility reduction below 1 SM NA. Baro-VNAV NA when using Mountain Village altimeter setting. For uncompensated Baro-VNAV systems, LNAV/VNAV NA below -19°C or above 54°C. When local altimeter setting not received, use Mountain Village altimeter setting and increase all DA 29 feet and all MDAs 40 feet and LNAV visibility Cat C/D 1/8 SM and Circling visibility Cat C 1/8 SM, Cat D 1/4 SM.

MISSED APPROACH: Climb to 2600 direct YOZMO and hold.

AWOS-3P 128.7	ANCHORAGE CENTER 124.0	CTAF 122.3
-------------------------	----------------------------------	----------------------



CATEGORY	A	B	C	D
LPV DA		508-1	200 (200-1)	
LNAV/VNAV DA		884-2	576 (600-2)	
LNAV MDA	960-1	652 (700-1)	960-1 7/8	652 (700-1 7/8)
C CIRCLING	960-1	648 (700-1)	960-1 7/8	960-2
			648 (700-1 7/8)	648 (700-2)

AK, 17 APR 2025 to 12 JUN 2025

AK, 17 APR 2025 to 12 JUN 2025

REL Rwy 17 and 35
HIRL Rwy 17-35
MIRL Rwy 6-24