

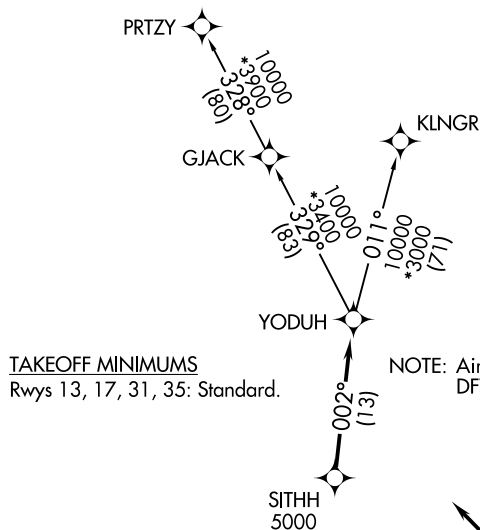
NEW BRAUNFELS NTL (BAZ)  
NEW BRAUNFELS, TEXAS

## YODUH ONE DEPARTURE (RNAV)

**TOP ALTITUDE:  
ASSIGNED BY ATC**

RADAR required.

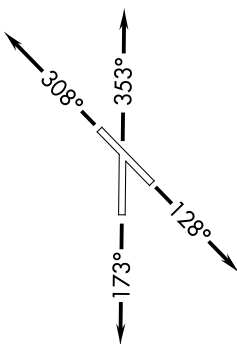
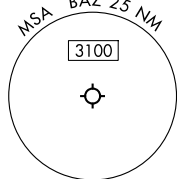
127.05 285.4



## TAKEOFF MINIMUMS

Rwys 13, 17, 31, 35: Standard.

NOTE: Aircraft destined for airports north/northeast of DFW terminal area must file the KLNGR Transition.

SITHH  
500C

NOTE: Chart not to scale.



## DEPARTURE ROUTE DESCRIPTION

TAKEOFF RUNWAY 13: Climb on heading 128° or as assigned by ATC, for vectors to SITHH, thence . . .

TAKEOFF RUNWAY 17: Climb on heading 173° or as assigned by ATC, for vectors to SITHH, thence . . .

**TAKEOFF RUNWAY 31:** Climb on heading 308° or as assigned by ATC, for vectors to SITHH, thence . . .

**TAKEOFF RUNWAY 35:** Climb on heading 353° or as assigned by ATC, for vectors to SITHH, thence . . .

... on track 002° to YODUH, then on Transition. Maintain ATC assigned altitude.

## KLNGR TRANSITION (YODUH1.KLNGR)

PRTZY TRANSITION (YODUH1.PRTZY)

YODUH ONE DEPARTURE (RNAV)

(YODUH1.YODUH) 25JAN24

NEW BRAUNFELS NTL (BAZ)

SC-3, 17 APR 2025 to 15 MAY 2025