

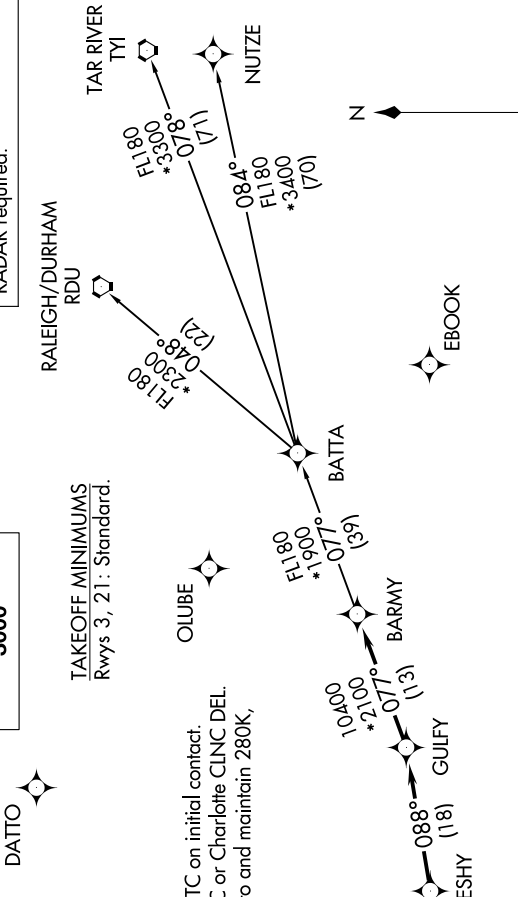
BARMY FIVE DEPARTURE (RNAV)

SE-2, 17 APR 2025 to 15 MAY 2025

CHARLOTTE DEP CON
120.05 257.2
ASOS
135.725
CLNC DEL
127.2
UNICOM
123.0

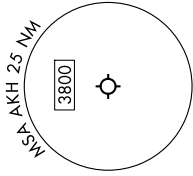
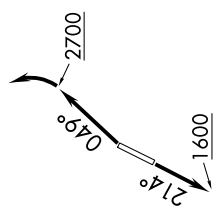
TOP ALTITUDE:
3000

RNAV 1 - DME/DME/IRU or GPS.
RADAR required.



TAKEOFF MINIMUMS
Rwys 3, 21: Standard.

NOTE: For turbo jets only.
 NOTE: If unable to accept climb rates, advise ATC on initial contact.
 NOTE: Transponder code will be issued via PDC or Charlotte CLNC DEL.
 NOTE: Upon reaching 10000 MSL, accelerate to and maintain 280K, if unable advise ATC.



NOTE: Chart not to scale.

DEPARTURE ROUTE DESCRIPTION

TAKEOFF RUNWAY 3: Climb on heading 049° to 2700 before turning left, then on heading assigned by ATC, thence. . . .
TAKEOFF RUNWAY 21: Climb on heading 214° to 1600 before proceeding north, then on heading assigned by ATC, thence. . . .

. . . on RADAR vectors to MESHY, then on depicted route to BARMY. Then on assigned transition. Maintain 3000, expect clearance to filed altitude within 10 minutes after departure.

- NUTZE TRANSITION (BARMY5.NUTZE)
- RALEIGH/DURHAM TRANSITION (BARMY5.RDU)
- TAR RIVER TRANSITION (BARMY5.TYI)

SE-2, 17 APR 2025 to 15 MAY 2025