

VOR/DME MCW 114.9 Chan 96	APP CRS 297°	Rwy Idg TDZE Apt Elev N/A N/A 1229
---	------------------------	--

VOR-A

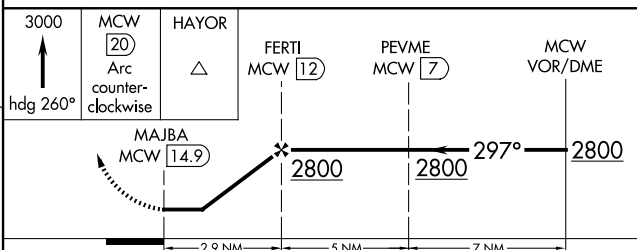
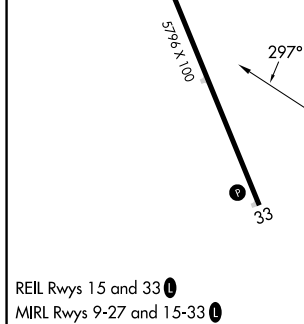
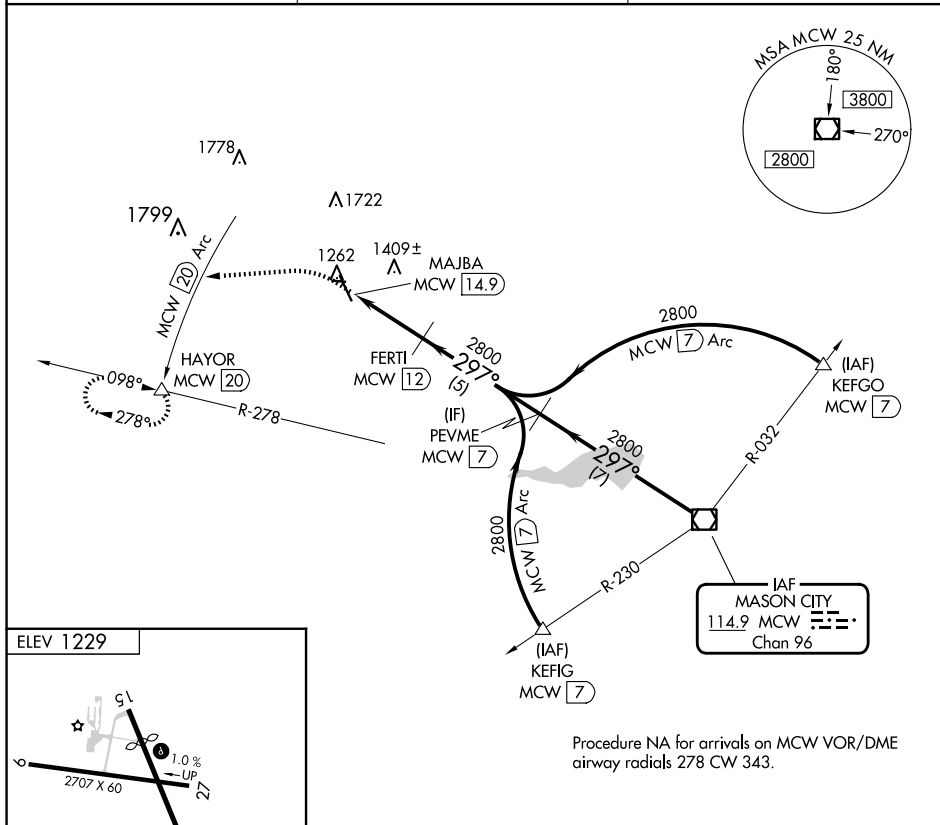
FOREST CITY MUNI/TRIMBLE FLD (FXY)

DME required.

⚠ When local altimeter setting not received use Mason City altimeter setting and increase all MDA 40 feet. Circling to Rwy 9, 27 33 NA at night.

MISSED APPROACH: Climb to 3000 on heading 260° to MCW 20 DME Arc and on MCW 20 DME Arc counterclockwise to HAYOR/20 DME and hold.

AWOS-3 123.925	MINNEAPOLIS CENTER 127.3 257.675	UNICOM 122.8 (CTAF)
--------------------------	--	-------------------------------



CATEGORY	A	B	C	D
C CIRCLING	1680-1 451 (500-1)	1760-1 531 (600-1)		NA

NC-3, 17 APR 2025 to 15 MAY 2025

NC-3, 17 APR 2025 to 15 MAY 2025