

APP CRS	Rwy Idg	<b>2999</b>
<b>081°</b>	TDZE	<b>9</b>
	Apt Elev	<b>9</b>

# RNAV (GPS) RWY 8

THIBODAUX MUNI (L83)

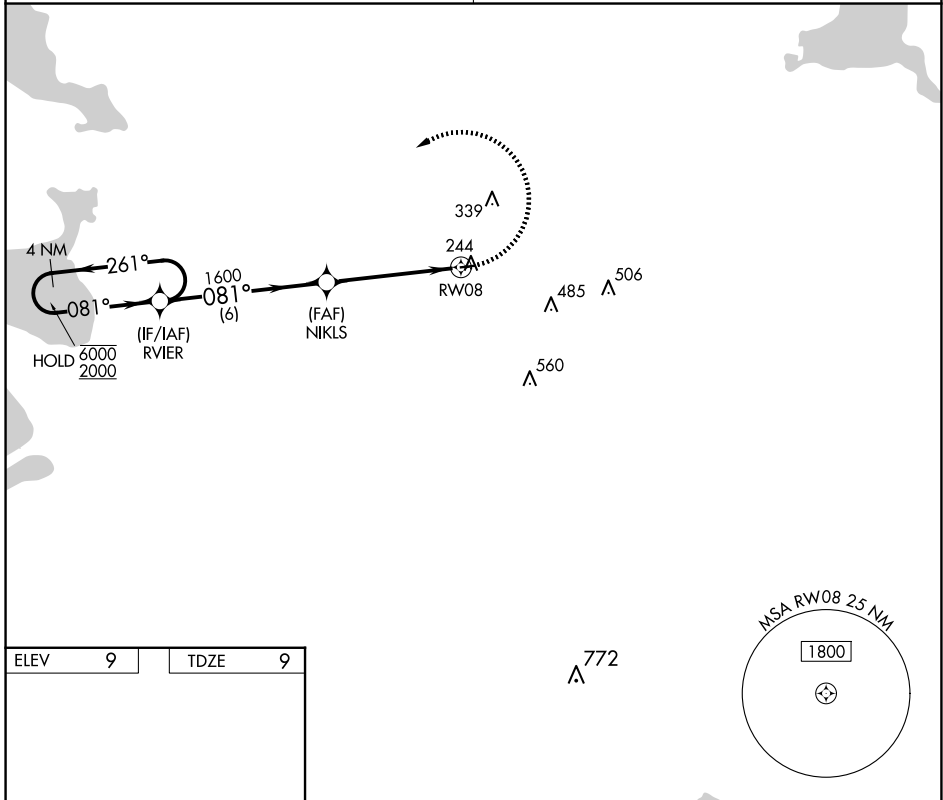
RNP APCH - GPS

**NA** Rwy 8 helicopter visibility reduction below 1 SM NA. Procedure NA at night. Obtain local altimeter setting on CTAF; when not received, use MSY altimeter setting and increase all MDAs 80 feet.

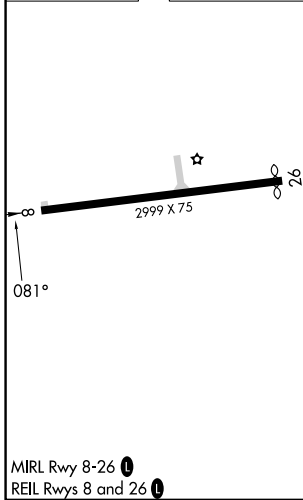
MISSED APPROACH: Climbing left turn 2000 direct RVIER and hold.

NEW ORLEANS APP CON  
**118.9 256.9**

UNICOM  
**122.8 (CTAF)**



ELEV	9	TDZE	9
------	---	------	---



	4 NM Holding Pattern		RVIER	2000	RVIER
	6000	← 261°	→ 081°		
	2000				
			081°	NIKLS	
			1600		
			3.00°		
			TCH 55		
			6 NM	4.8 NM	
CATEGORY	A	B	C	D	
LNAV MDA	460-1	451 (500-1)	NA		
CIRCLING	660-1	651 (700-1)	NA		

MIRL Rwy 8-26 **1**  
REIL Rwy 8 and 26 **1**

THIBODAUX, LOUISIANA  
Orig 26DEC24

29°45'N-90°50'W

# THIBODAUX MUNI (L83) RNAV (GPS) RWY 8

SC-4, 17 APR 2025 to 15 MAY 2025

SC-4, 17 APR 2025 to 15 MAY 2025