

WAAS CH 72923 W25A	APP CRS 248°	Rwy Idg TDZE Apt Elev	5571 2800 2805
--	------------------------	-----------------------------	---

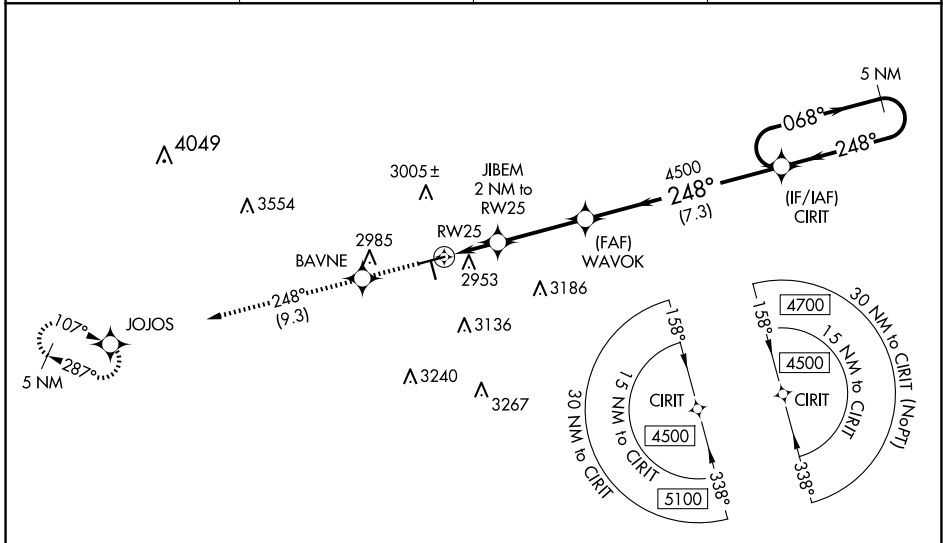
RNAV (GPS) RWY 25

MIDLAND AIRPARK (MIDD)

V Baro-VNAV NA when using Midland Intl Air and Space Port altimeter setting.
A For uncompensated Baro-VNAV systems, LNAV/VNAV NA below -20°C (-4°F) or above 26°C (78°F). When local altimeter setting not received, use Midland Intl Air and Space Port altimeter setting and increase LPV DA to 3109 and LNAV/VNAV DA to 3172 and all MDA 40 feet, increase LNAV/VNAV all Cats, LNAV Cats C/D and Circling Cat C visibility ¼ SM. When VGSI inop, Straight-in/Circling Rwy 25 procedure NA at night. DME/DME RNP-0.3 NA. Helicopter visibility reduction below 1 SM NA.

MISSED APPROACH: Climb to 5000 direct BAVNE and on 248° track to JOJOS and hold.

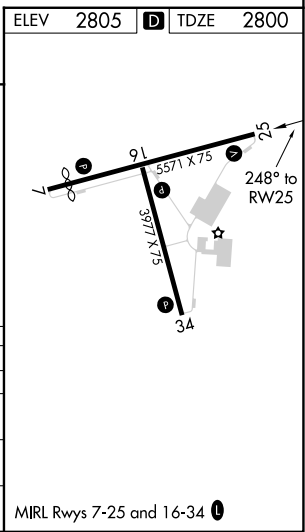
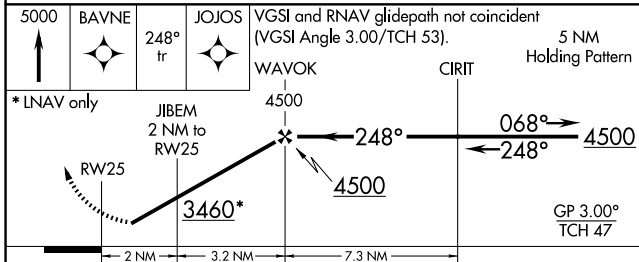
AWOS-3 118.125	MIDLAND APP CON * 124.6 290.4	CLNC DEL 121.8	UNICOM 122.7 (CTAF) 0
--------------------------	---	--------------------------	--



SC-3, 17 APR 2025 to 15 MAY 2025

SC-3, 17 APR 2025 to 15 MAY 2025

ELEV 2805	D TDZE 2800
-----------	--------------------



CATEGORY	A	B	C	D
LPV DA	3081-1 281 (300-1)			
LNAV/VNAV DA	3144-1 1/8 344 (400-1 1/8)			
LNAV MDA	3220-1 420 (500-1)	3220-1 1/4 420 (500-1 1/4)		
CIRCLING	3320-1 515 (600-1)	3440-1 3/4 635 (700-3/4)	3700-3 895 (900-3)	

MIRL Rwy 7-25 and 16-34 **0**