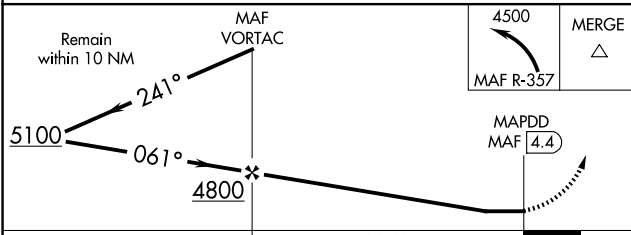
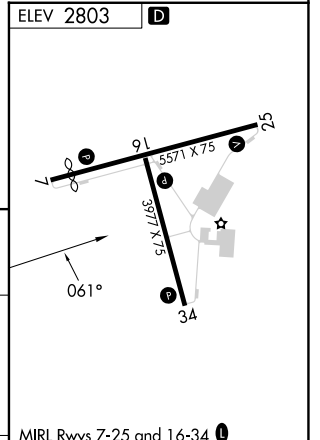
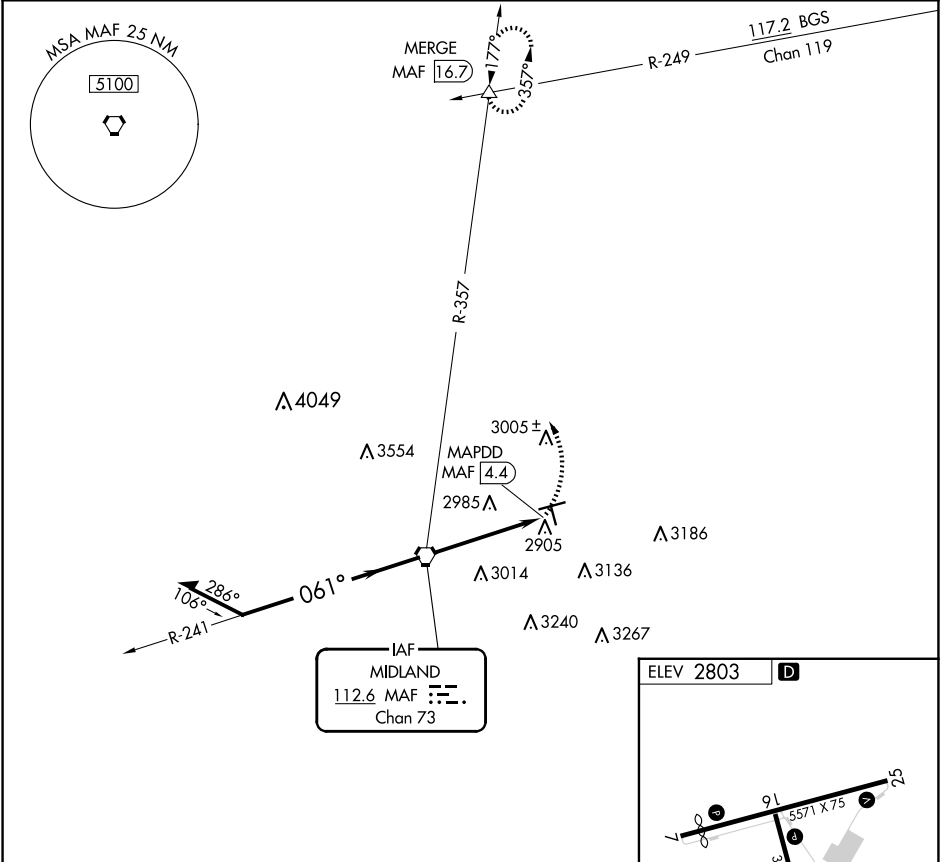


| | | | |
|--|------------------------|---|--------------------|
| VORTAC MAF 112.6 Chan 73 | APP CRS 061° | Rwy Idg TDZE Apt Elev 2803 | N/A N/A 2803 |
|--|------------------------|---|--------------------|

VOR-A
MIDLAND AIRPARK (MIDD)

| | | | |
|--|---|---|---------------------------------|
| <p>▼ When local altimeter setting not received, use Midland Intl Air and Space Port altimeter setting and increase all MDAs 40 feet and Cat C visibility ¼ SM.</p> <p>▲ NA</p> | | <p>MISSED APPROACH: Climbing left turn to 4500 via MAF R-357 to MERGE Int and hold.</p> | |
| AWOS-3 118.125 | MIDLAND APP CON ★ 124.6 290.4 | CLNC DEL 121.8 | UNICOM 122.7 (CTAF) 0 |



| CATEGORY | FAF to MAP 4.4 NM | | | | | |
|----------|-------------------|-------------|-------------------------|-----------------------|------|------|
| | A | B | C | D | | |
| CIRCLING | 3380-1 | 577 (600-1) | 3440-1¼ 635 (700-1¾) | 3700-3 897 (900-3) | | |
| | Knots | 60 | 90 | 120 | 150 | 180 |
| | Min:Sec | 4:24 | 2:56 | 2:12 | 1:46 | 1:28 |

SC-3, 17 APR 2025 to 15 MAY 2025

SC-3, 17 APR 2025 to 15 MAY 2025