

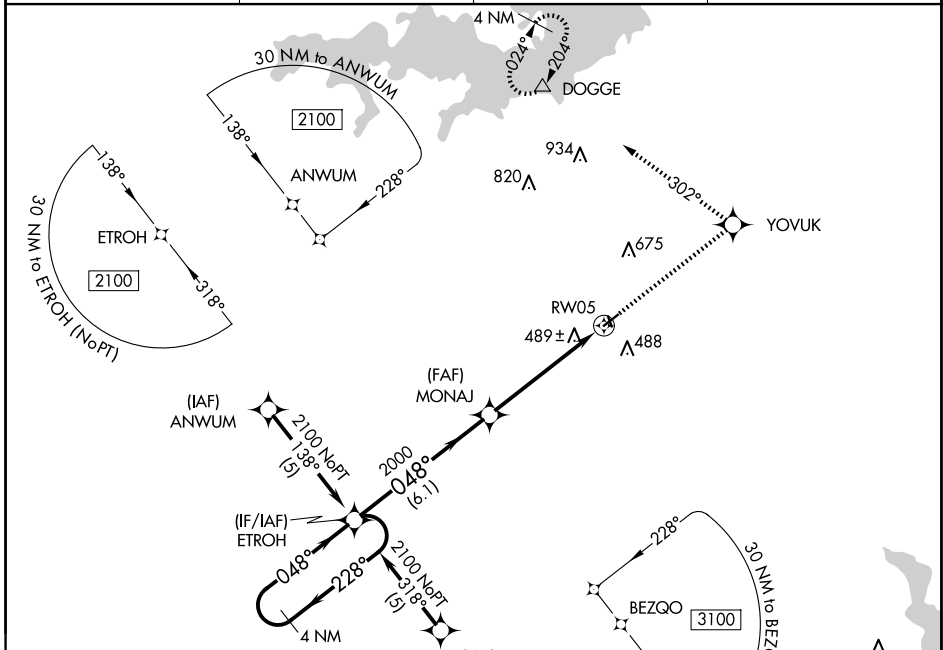
APP CRS	Rwy Idg	3800
048°	TDZE	280
	Apt Elev	280

RNAV (GPS) RWY 5

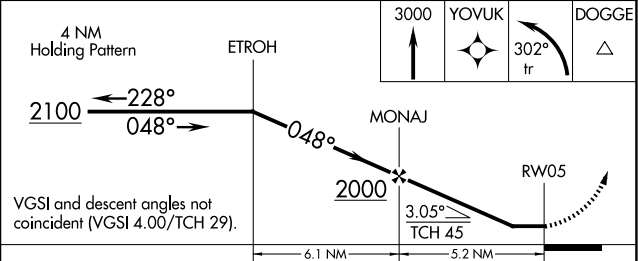
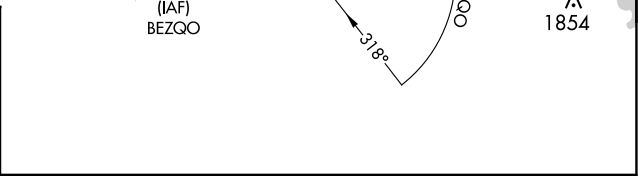
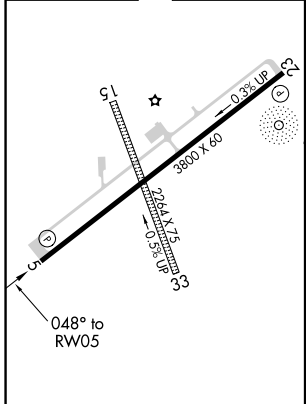
HALL-MILLER MUNI (ATA)

RNP APCH.		MISSED APPROACH: Climb to 3000 direct YOYUK and left turn via 302° track to DOGGE and hold.
▼	Rwy 5 helicopter visibility reduction below 3/4 SM NA. Use Texarkana altimeter setting, when not received use Mount Pleasant altimeter setting and increase all MDA 40 feet.	
▲ NA		

AWOS-3 118.250	TXK ASOS 120.2	FORT WORTH CENTER 123.925 269.475	CTAF 122.9
--------------------------	--------------------------	---	----------------------



ELEV	280	TDZE	280
------	------------	------	------------



CATEGORY	A	B	C	D
LNAV MDA	860-1	580 (600-1)	NA	

ATLANTA, TEXAS
Amdt 1C 02JAN20

33°06'N-94°12'W

HALL-MILLER MUNI (ATA)

RNAV (GPS) RWY 5

SC-2, 17 APR 2025 to 15 MAY 2025

SC-2, 17 APR 2025 to 15 MAY 2025